

COMMUNITY CENTRE

Major Studio Project
Tanvi Kurtarkar

INTRODUCTION

INTRODUCTION

Initial Project Proposal

INTRODUCTION

Initial Project Proposal

Cultural Centre for Indigenous Art and Design

RESEARCH



RESEARCH

Silk farming community

Kurigowdana Doddi, Kanakapura



CO—DESIGN WORKSHOP





CO—DESIGN WORKSHOP

Aim: Understand the people's thinking, behaviour and needs



CO—DESIGN WORKSHOP

Results

An open space where the people can interact and communicate more.



CO—DESIGN WORKSHOP

Results

Research area where there will be provision for practicing something new as well as reading.



CO—DESIGN WORKSHOP

Results
A medical space.





CO—DESIGN WORKSHOP

Results

Playground and communal toilet.



OBJECTIVES

To create a sense of togetherness amongst the community members





OBJECTIVES

To create a sense of togetherness amongst the community members.

To promote their skills and talent.

OBJECTIVES

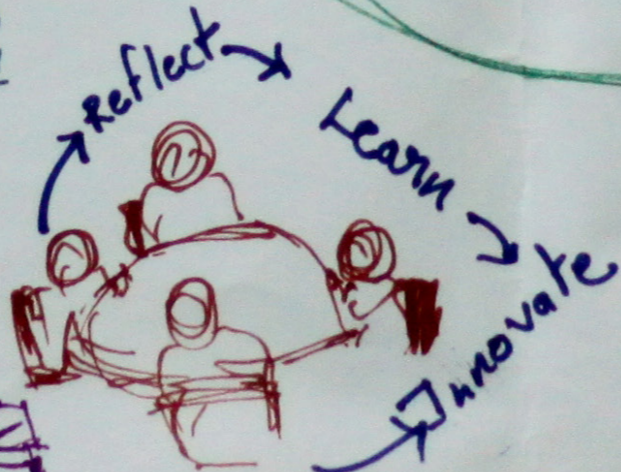
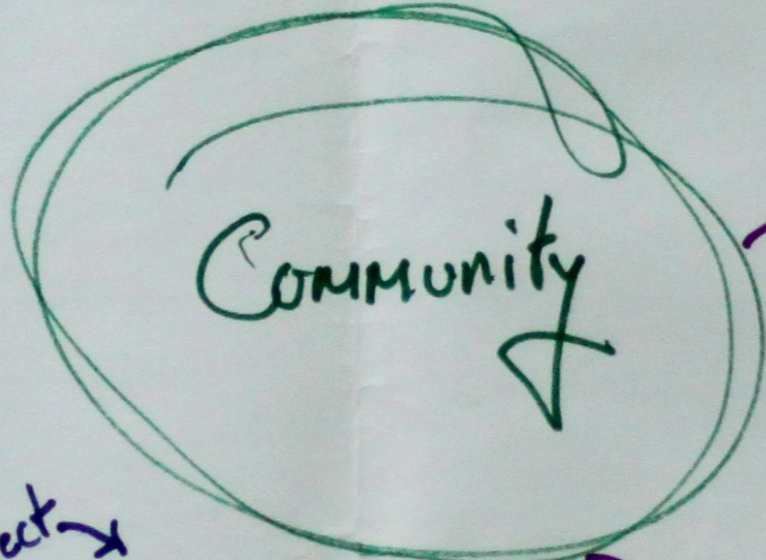
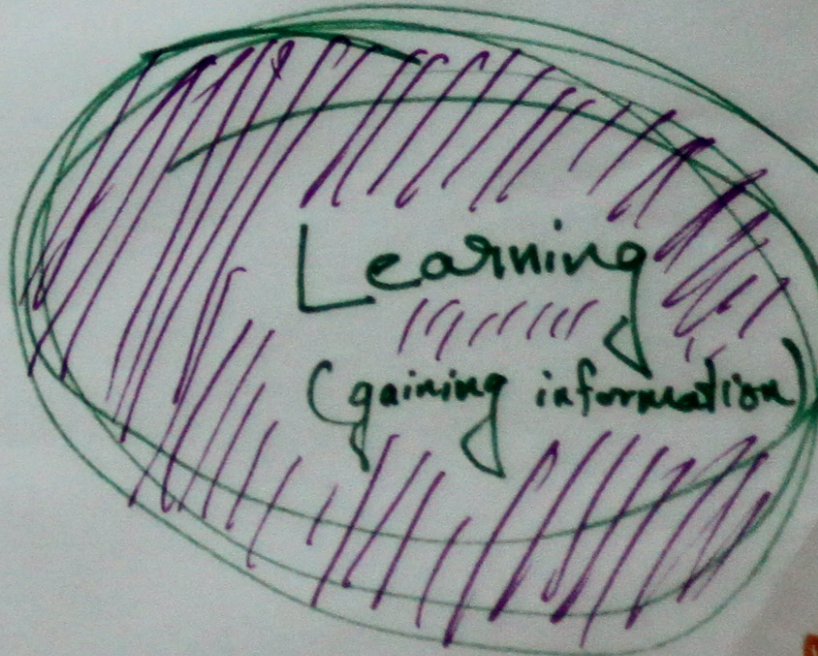
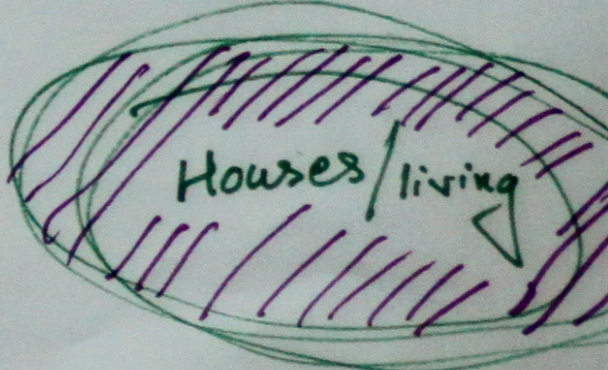
To create a sense of togetherness amongst the community members.

To promote their skills and talent.

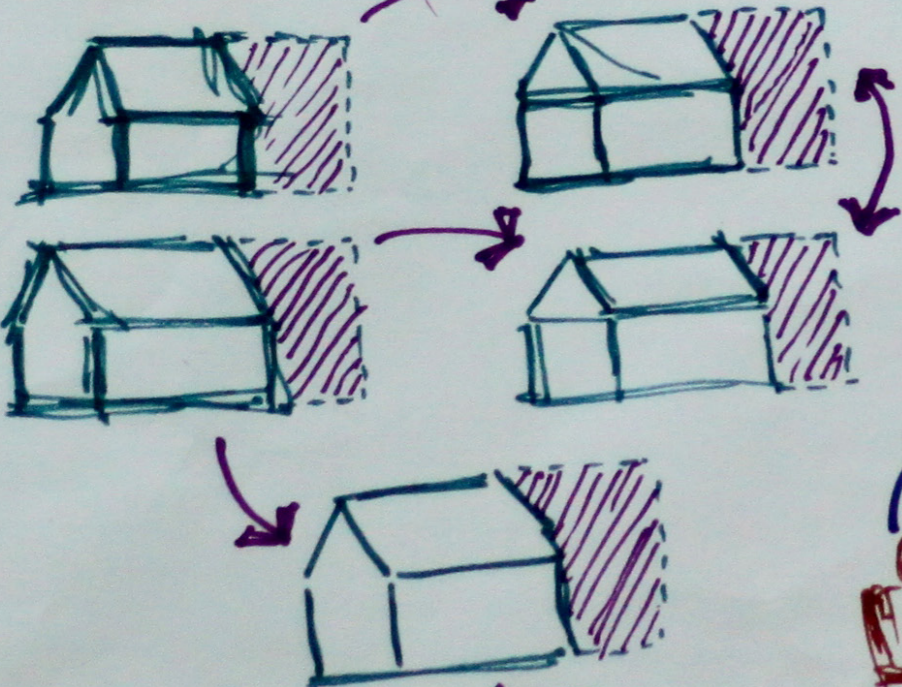
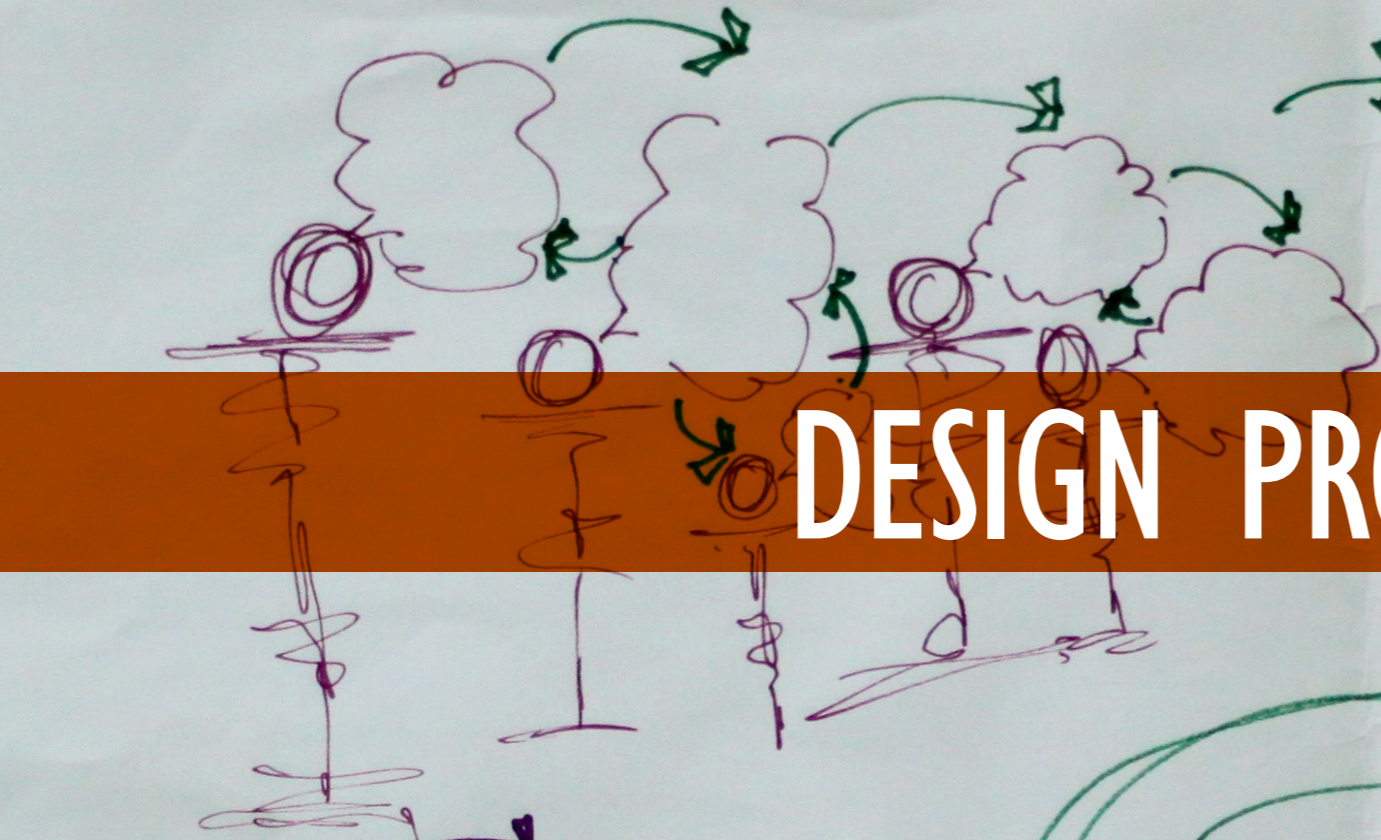
To create better livelihood opportunities, not merely to subsist but to grow and succeed.

DESIGN PROCESS

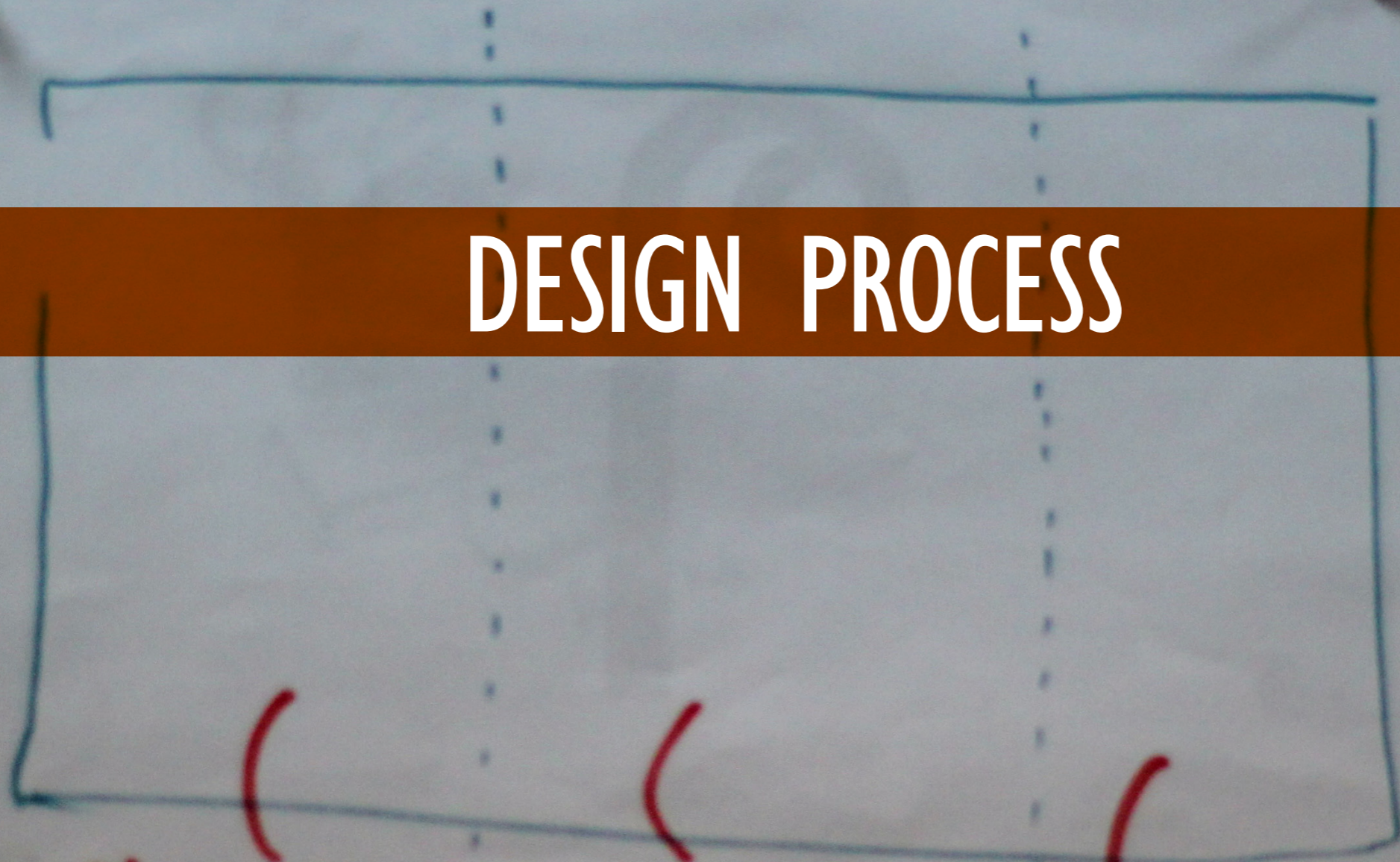
Share Ideas.



Spreading knowledge.



DESIGN PROCESS



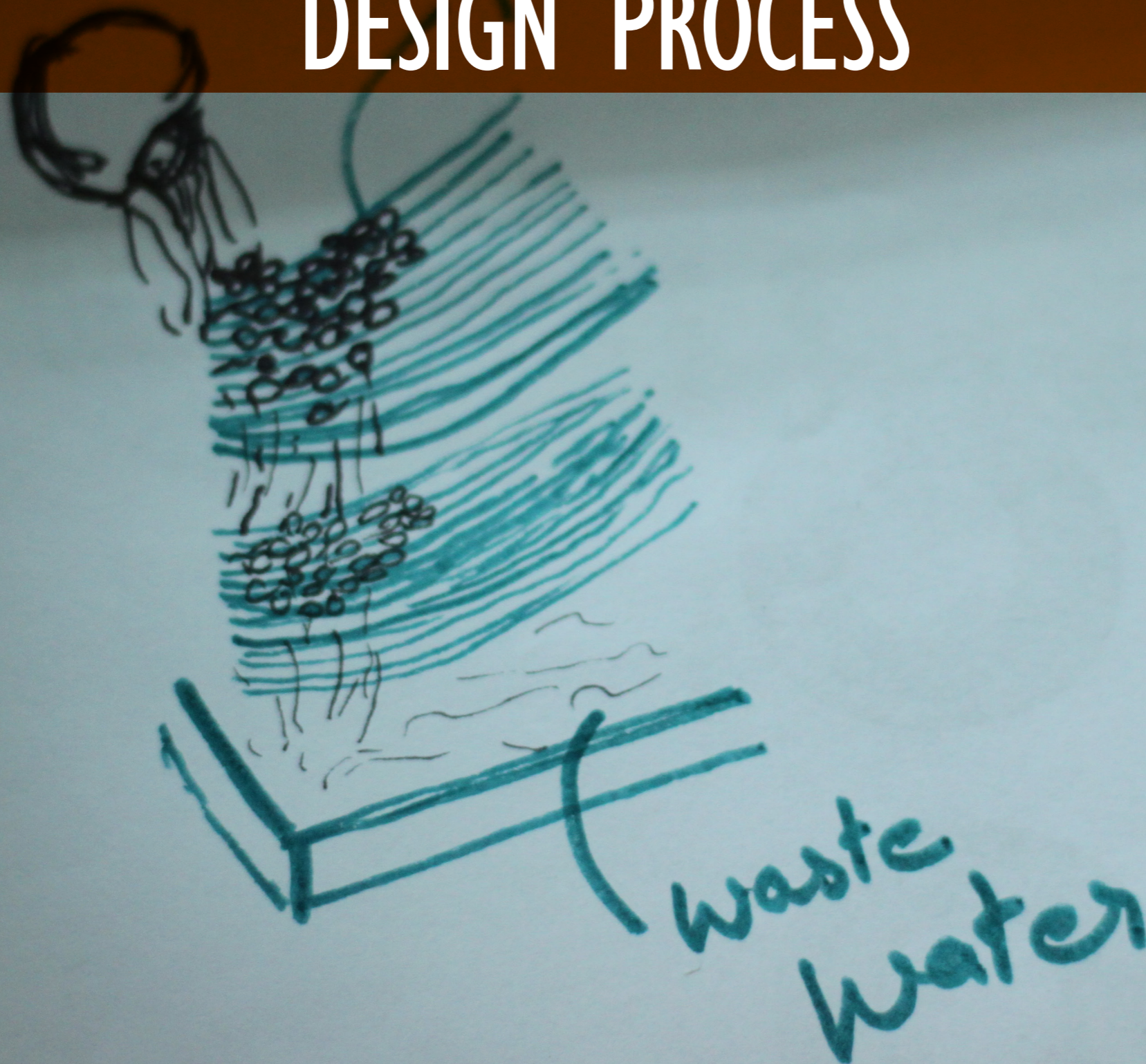
Storage
for the
plant

The feeding
area

Drying
the silk worms

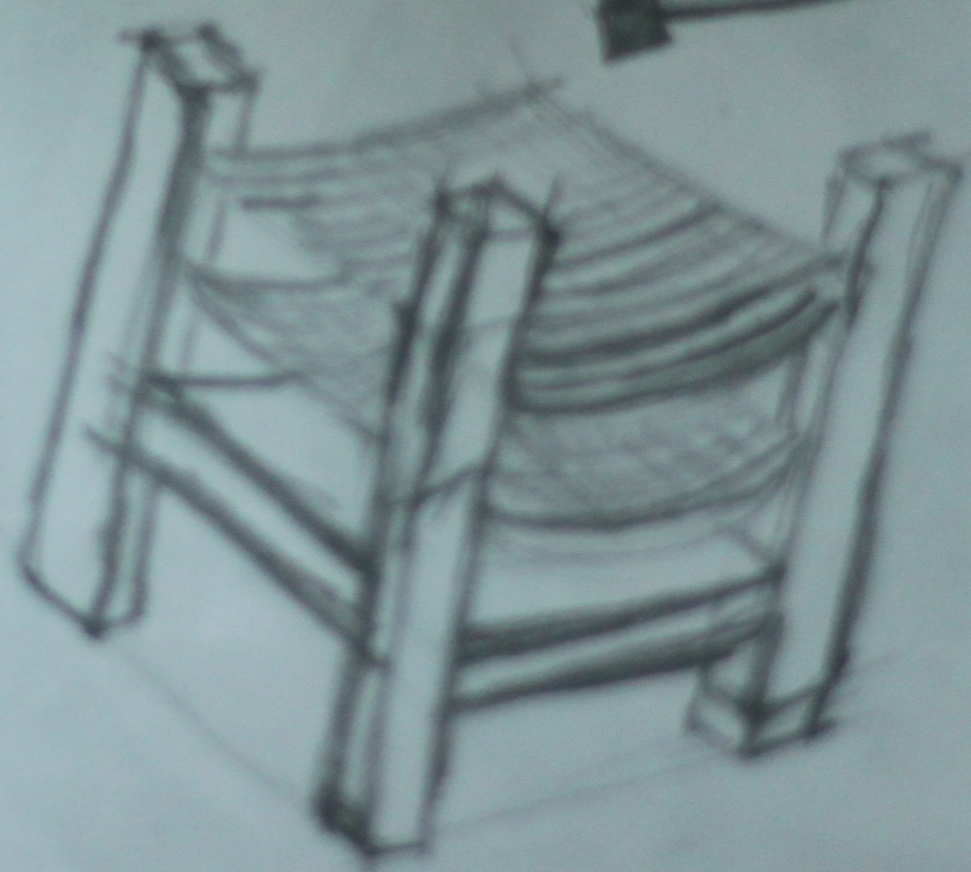
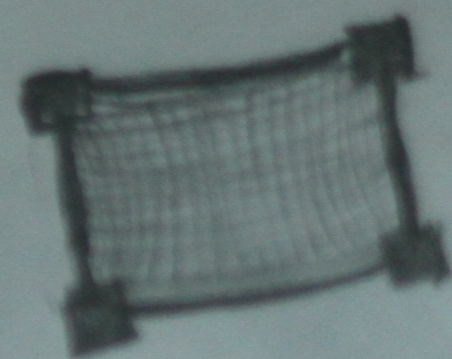
Water
Electricity
Element would
be sourced

DESIGN PROCESS

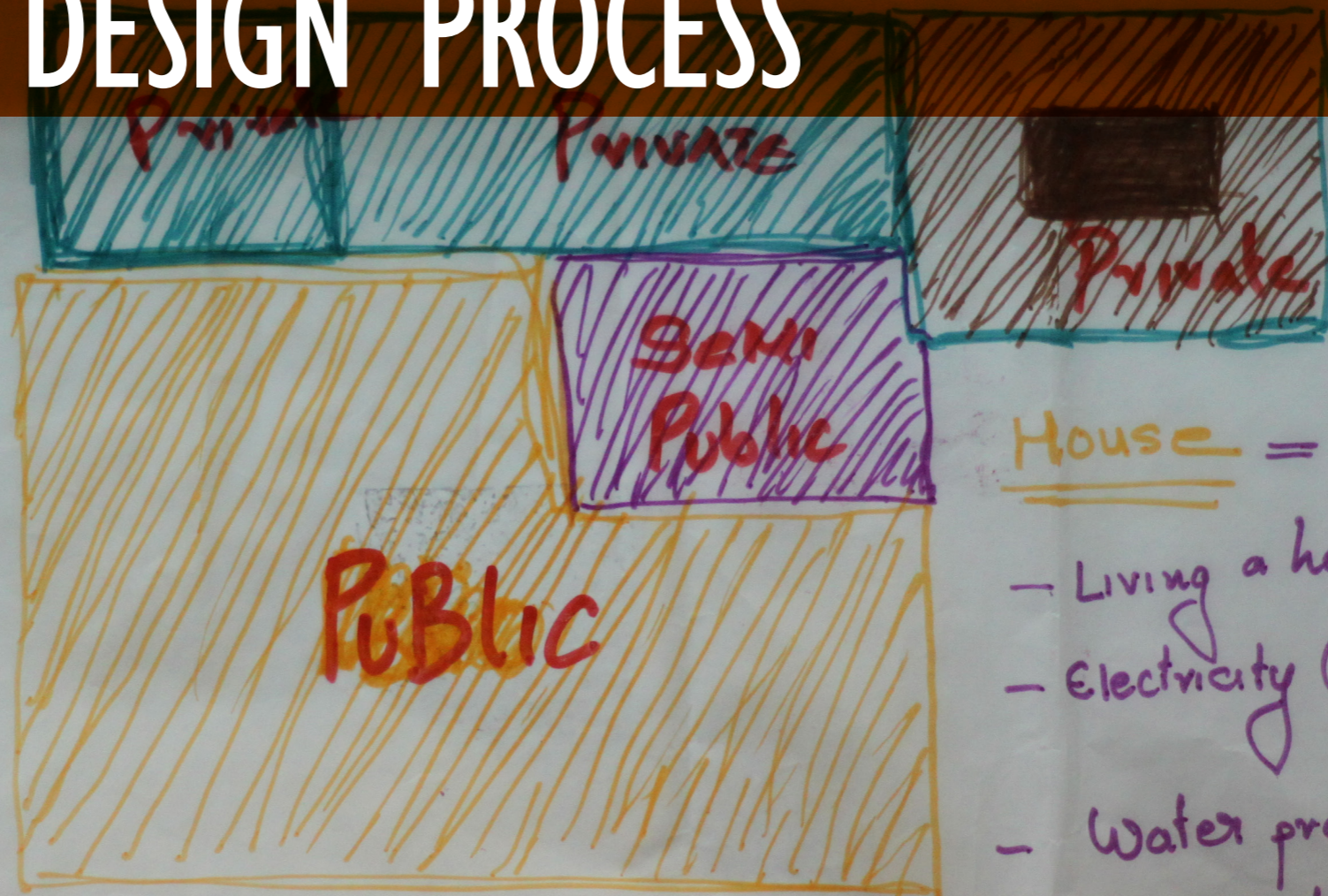


Plant

DESIGN PROCESS



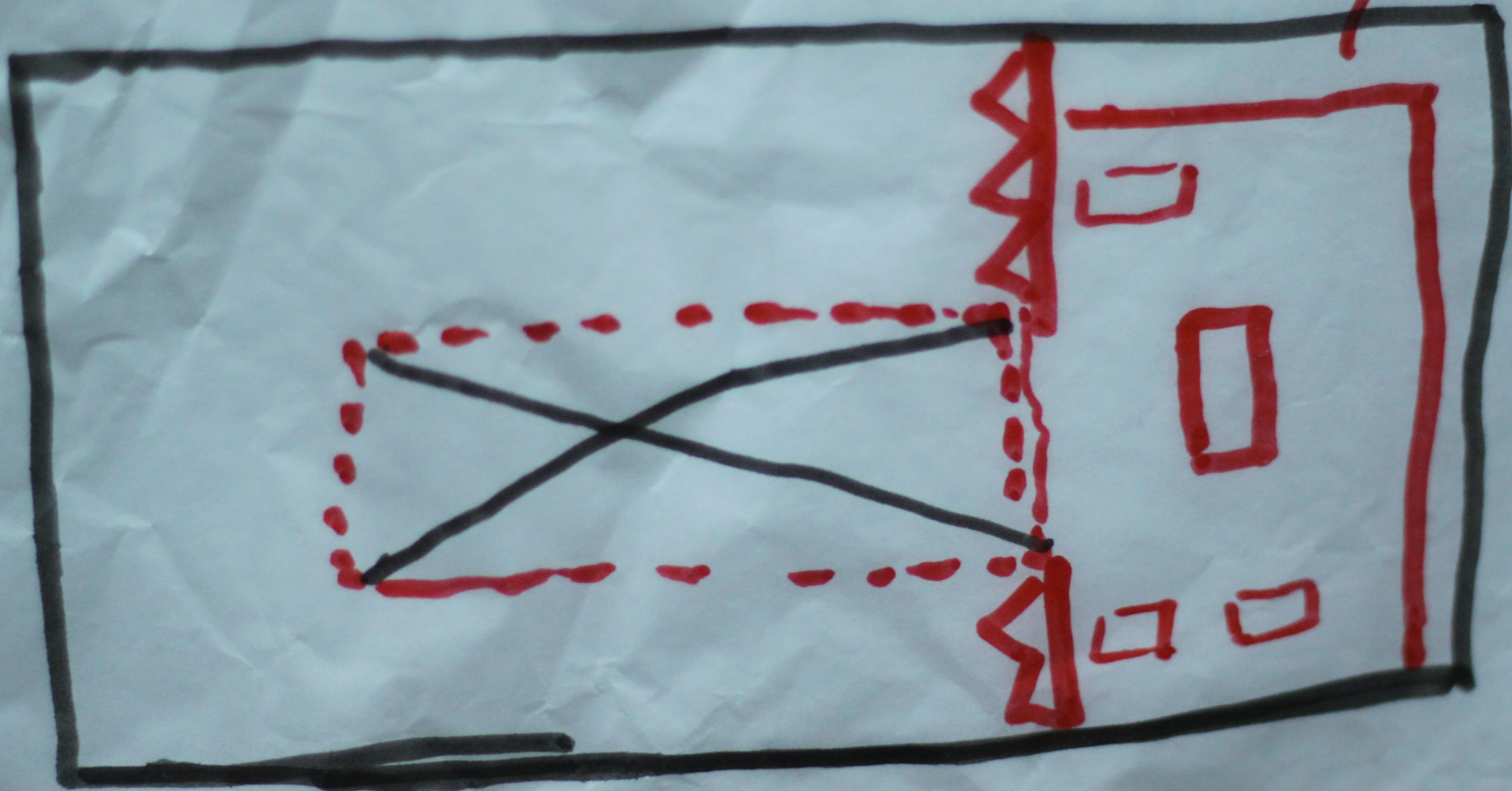
DESIGN PROCESS



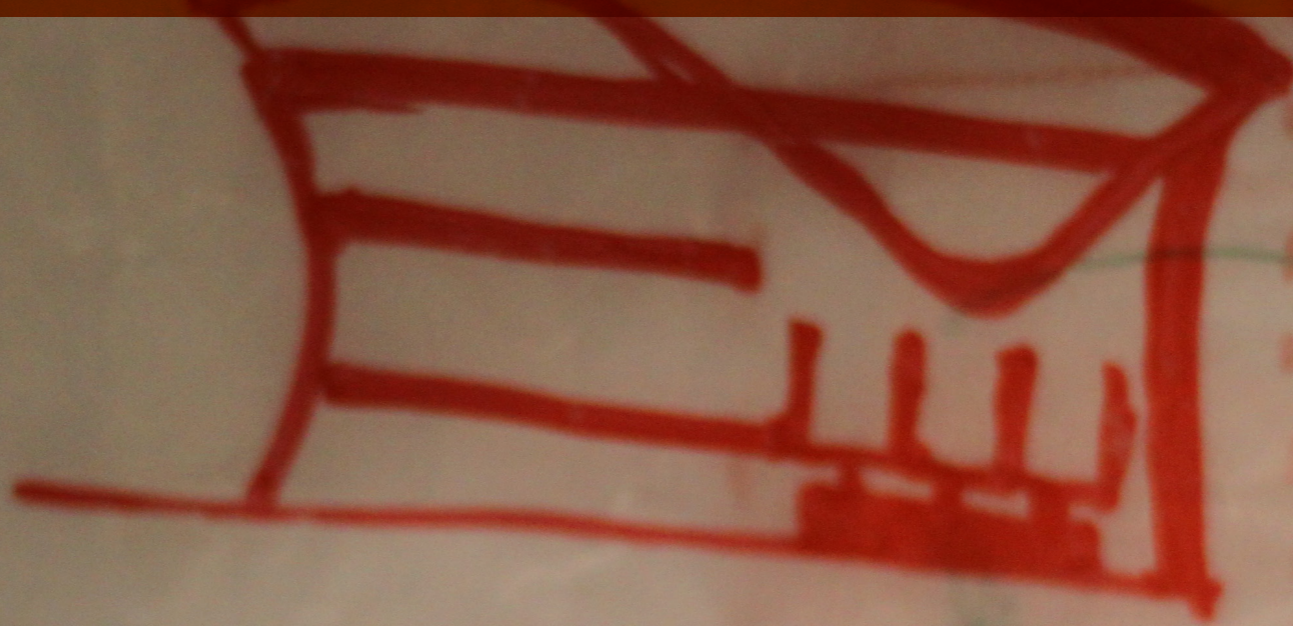
- House = Functions.
- Living a healthy life
 - Electricity (no power during the hours a-)
 - Water problems.
 - occupation effective & efficiency.

DESIGN PROCESS

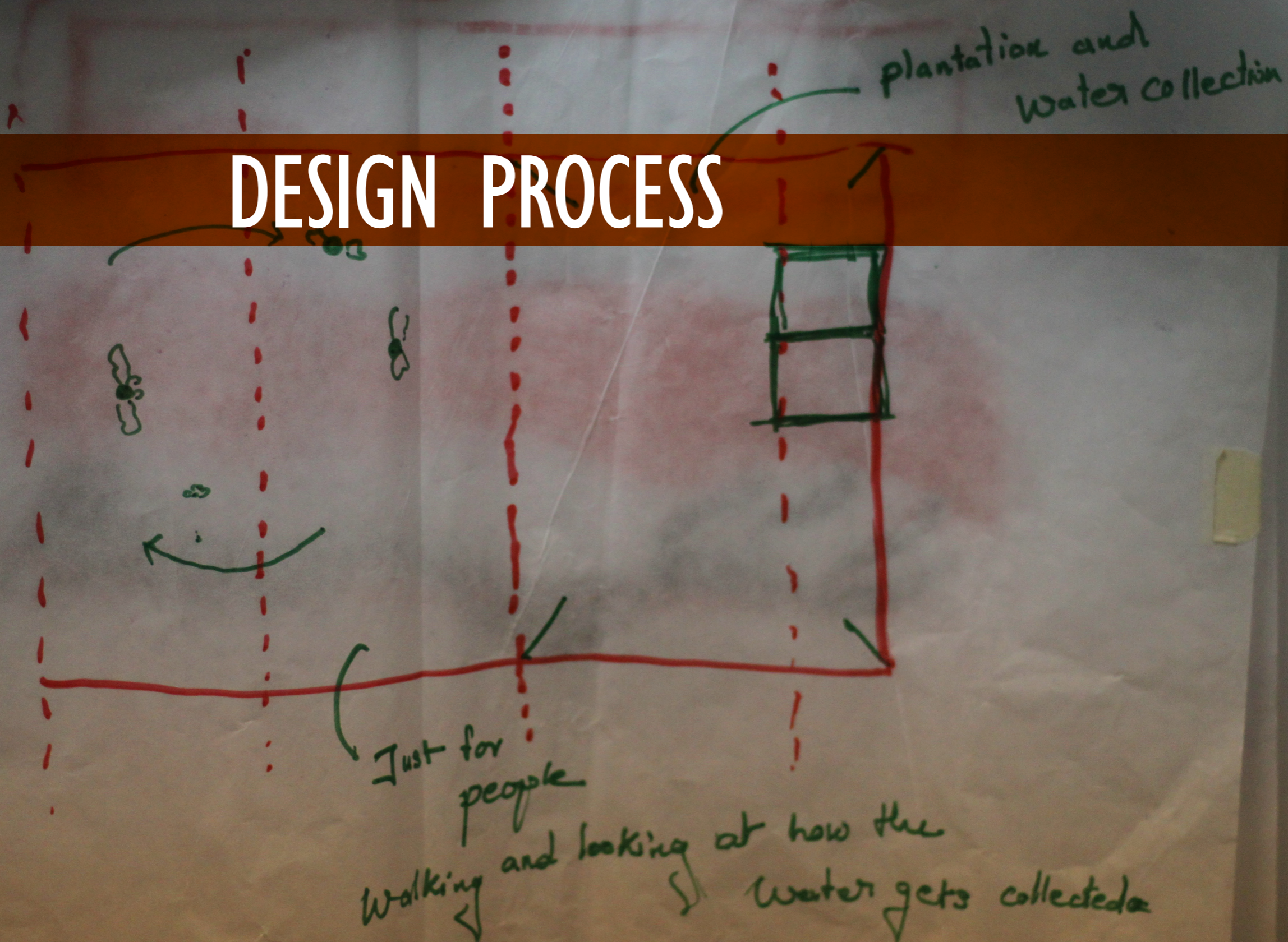
Test
Lab



DESIGN PROCESS



DESIGN PROCESS



plantation and
water collection

Just for
people

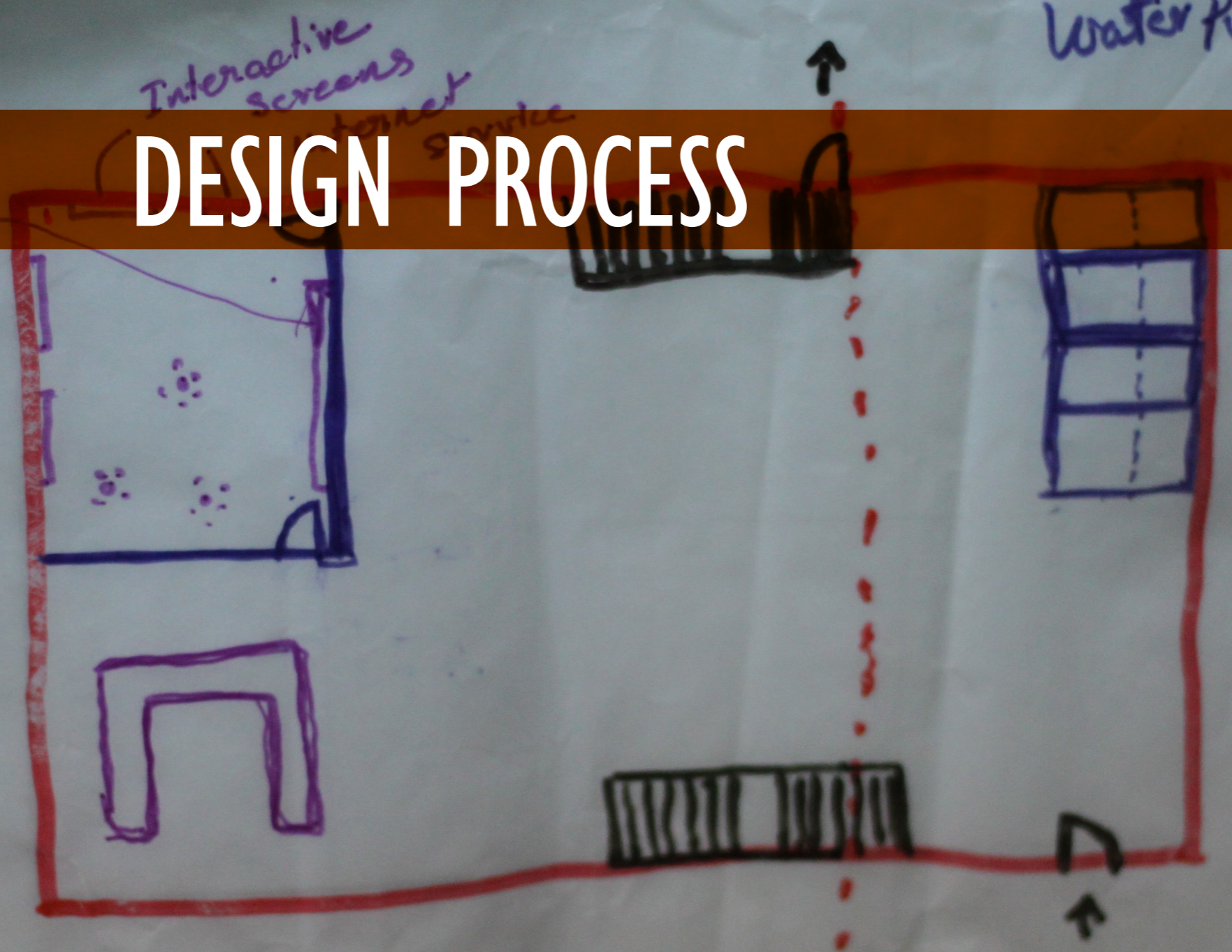
Walking and looking at how the
water gets collected

DESIGN PROCESS



DESIGN PROCESS

Library space



Water Purification

Clean water to

Research:



"The knowledge of living life or which 'reflects' in their present lives"

weaving of silk
their past generation...
S. Groups have created.

DESIGN PROCESS

Reflect



"The common activities of all the women in the community is the factor that made them create a social group..."

Activities such as:-
Cooking, working in the field, (Help the man), Weaving (interest), Looking after kids, and managing the house...

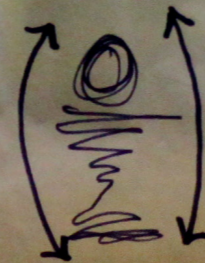
To get a better family life
They have been learning about from their elders.
Learn more ways
Their willing to innovate



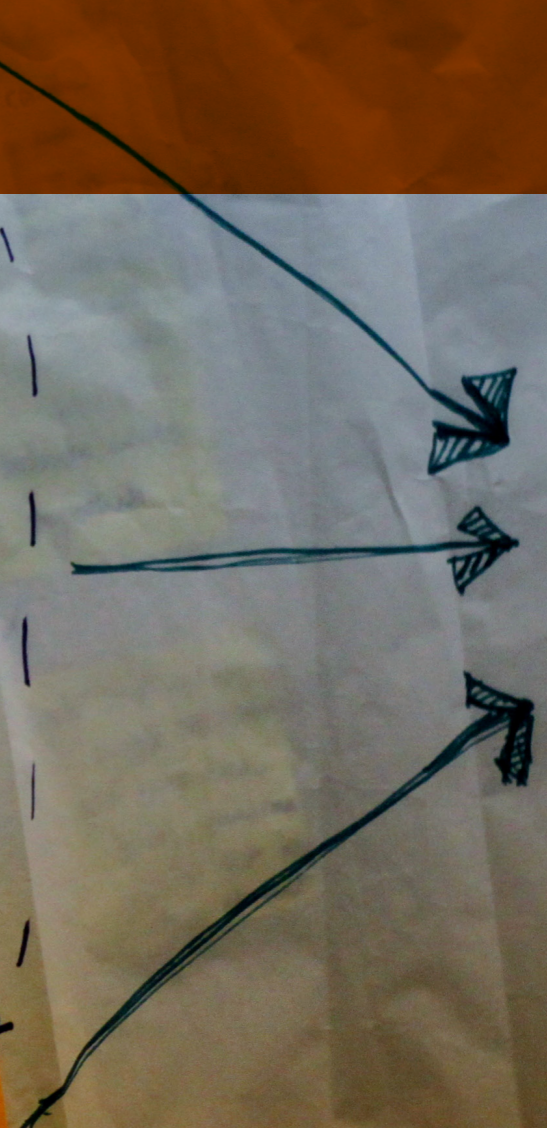
"Kids are the future of the community. Education is the most important factor in their life according to the research..."

= Education
- A mode of getting a good job.

Always takes ready to innovate. (With thinking betterment of the family)



Innovate



DESIGN PROCESS

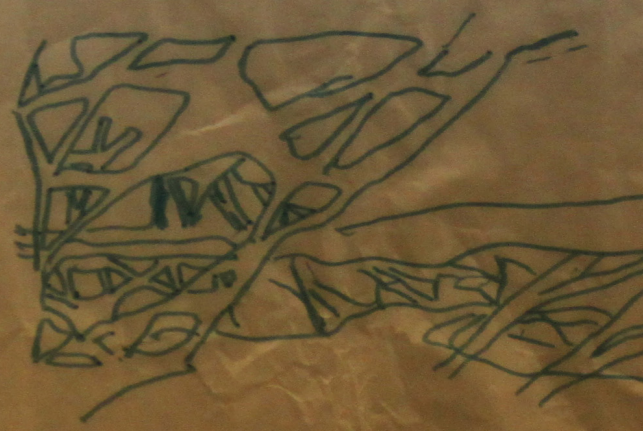
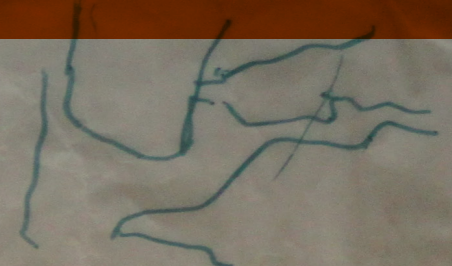
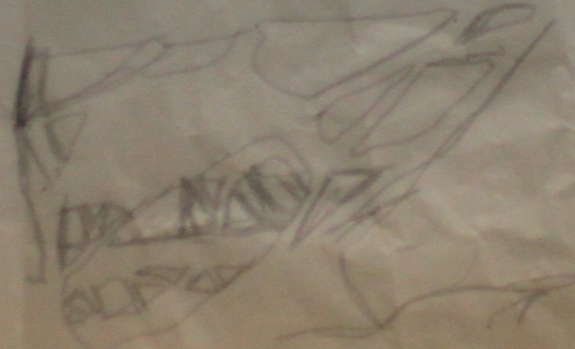
Handwritten notes and diagrams on crumpled paper:

- Top left: "Cocoon" written in red.
- Top center: "Which binds together different Aspects of the world like..."
- Center: "It has different parts" with a diagram of a circle divided into "Outside" and "Inside" sections, with a bracket labeled "together".
- Center: "A combination of the inside and outside of community" and "All together it makes a new 'object' (product)".
- Bottom left: A large green circular diagram with a central 'K' and a label "Inside".
- Right side: A vertical column of yellow sticky notes:
 - "How the different aspects of the community bind together"
 - "And how the binding is reflected in the cocoon. The way ~~the~~ a cocoon has different silk threads"
 - "The part where the silkworm gets outside the silk which they have woven"
 - "This ~~part~~ shows how the inside and the outside works together"
 - "The beauty of the nature and darkness inside creates shadows"
 - "Light, Motivation, Fresh environment and how the both combination would act as key element"
 - "It even says how the structure should be not completely enclosed."

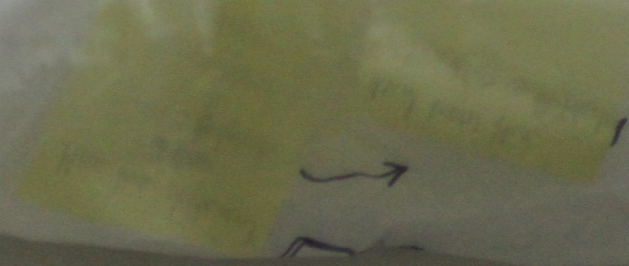
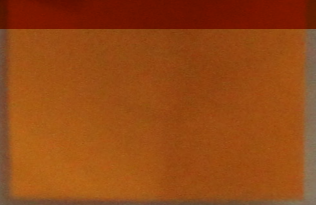
DESIGN PROCESS

Client Requirement

- = Community knowledge expanding activities.
- = Because of the industrial industries are getting creating lot of pollution and that is affecting the health & occupation.....
- = Research place.....
- = Electricity = "producing or a sources"
- = Water + Storing



community
values
together.



community centre

space table

community centre

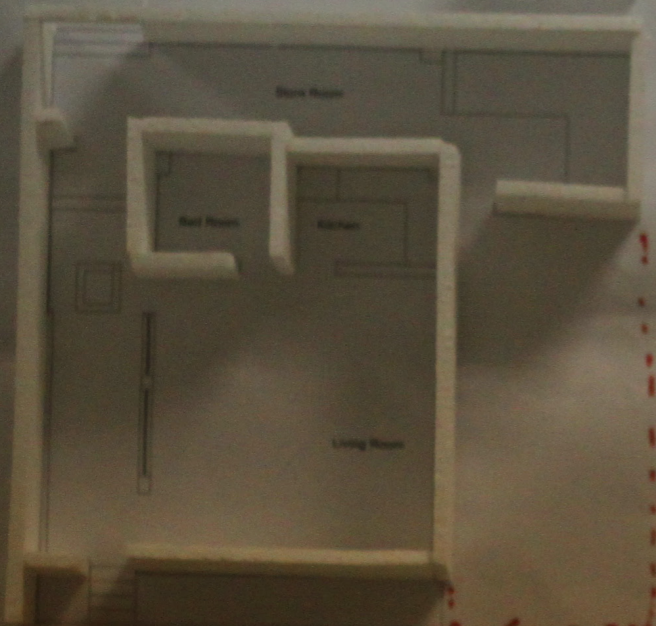
DESIGN PROCESS



EXISTING
F. PLAN

THROAT

DESIGN PROCESS



- Typical Housing

Workspace

Transparency

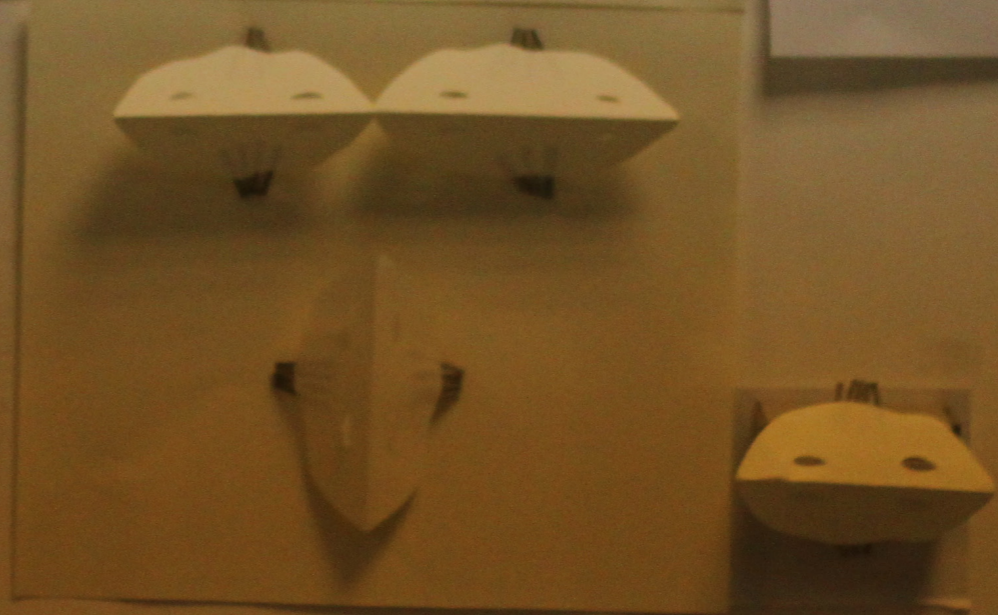
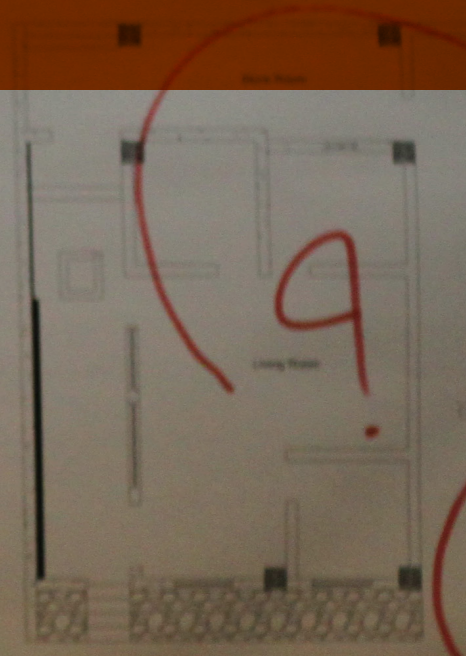
The core

The life (community)

When you see a column the outer material represents the transparency it relates the outside and the core.

The feeling inside and the atmosphere that is created inside is like home (safe, security and comfort)

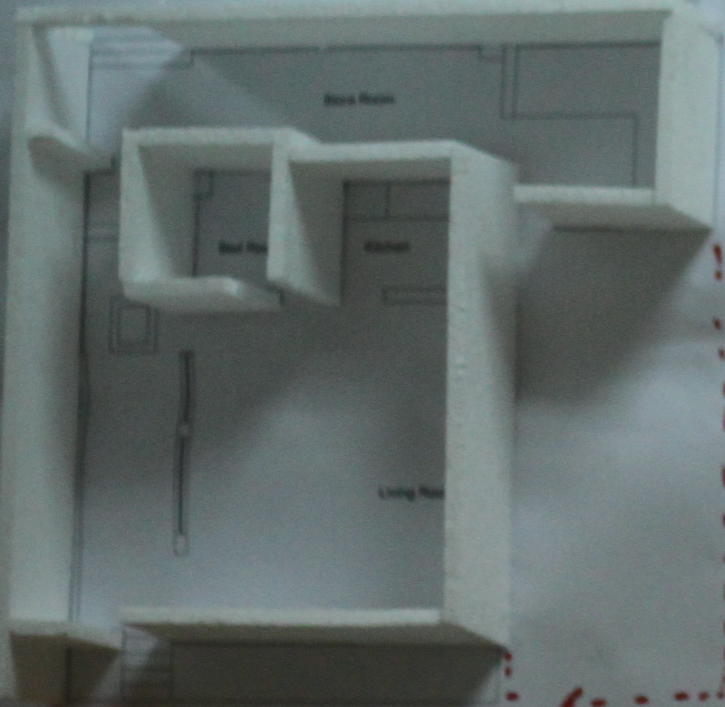
(This feeling is required by ideal water to live and prosper the common (the people))



BRITISH
P. PLAN

Process

DESIGN PROCESS

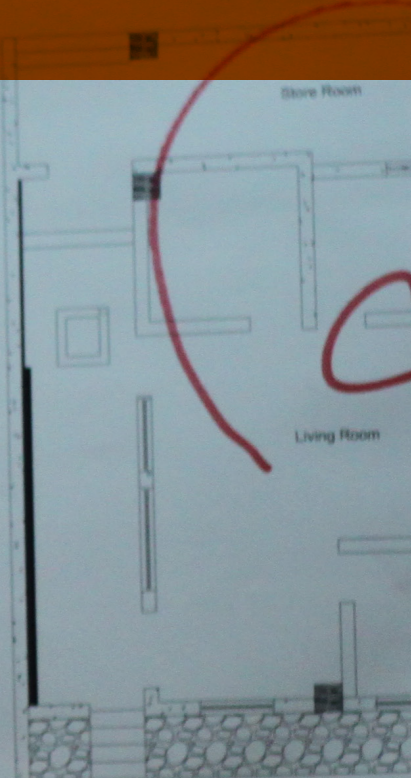


Transparency → **The core** → **The life (warmth)**

The core is the center inside which represents the whole community. The core is a space of shared knowledge and mutual knowledge that becomes that center of home.

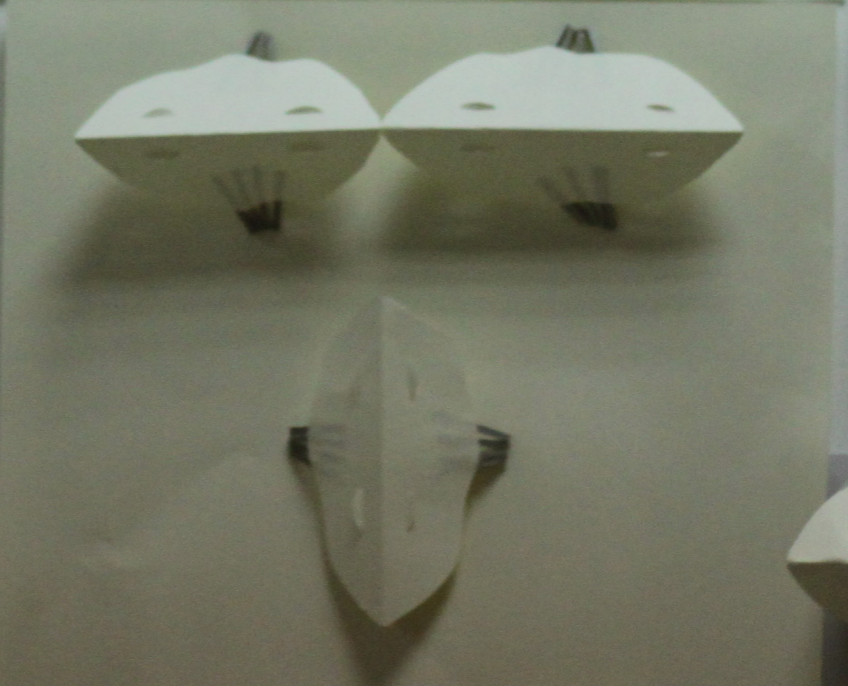
The feeling inside and the atmosphere that is created inside is like home (safe, security and comfort).
 (This feeling is required by the water to live and prosper the core. (The people))

When you see a column the outer material represents the transparency it relates the outside and the core.



Typical Housing

Workspace



DESIGN PROCESS

Services

* Knowledge / Learning

Centre...

- Discussion Area ■
- Gathering space ■
- Landscape area ■

* Medical Area

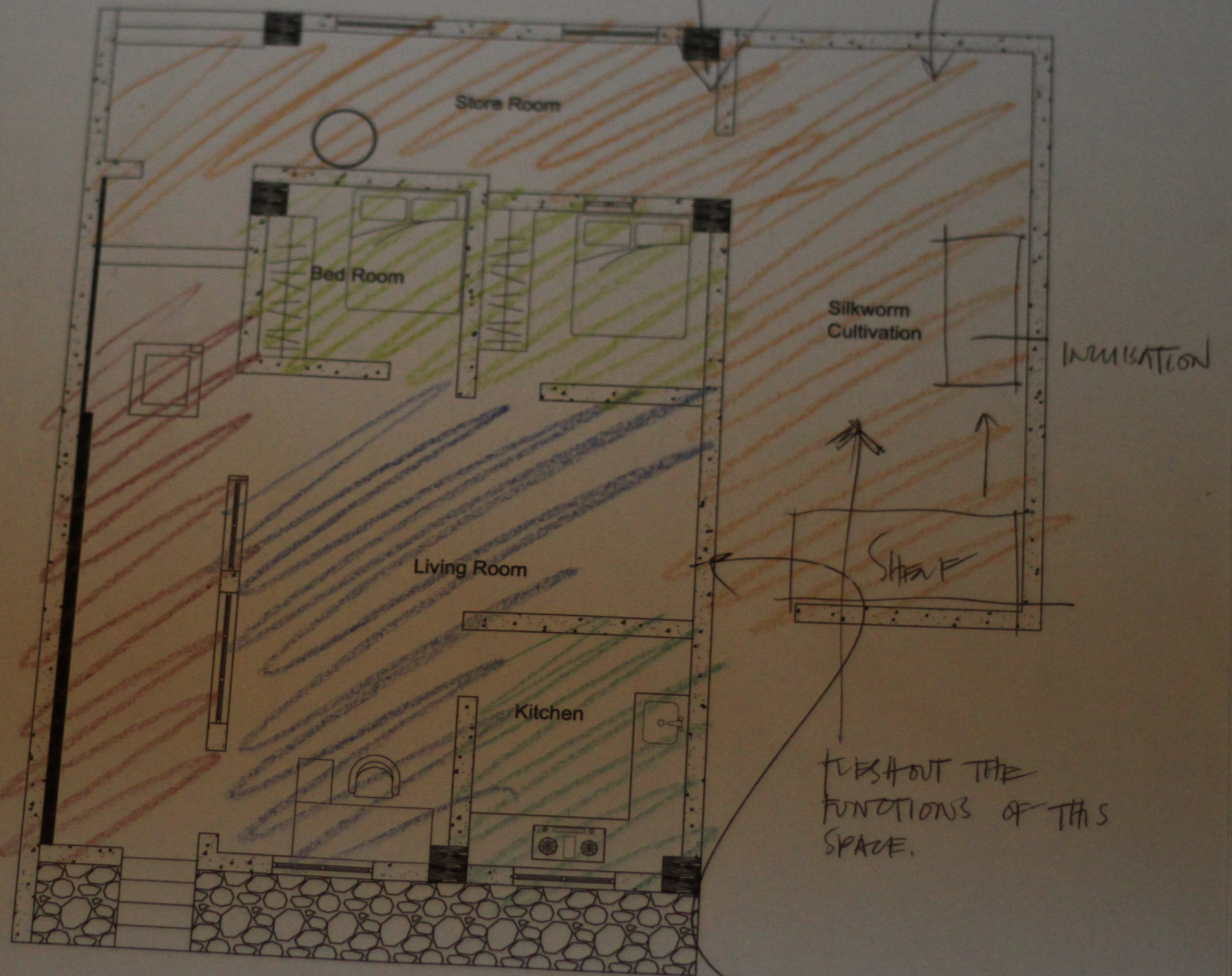
- Clinic
 - Men
 - Women ■
 - Kids
- First aid Area ■

* Workshop /

Exhibition
Area

- Product Development ■
- Display area ■
- Talk, Sharing and inviting people from different states countries for knowledge share. ■

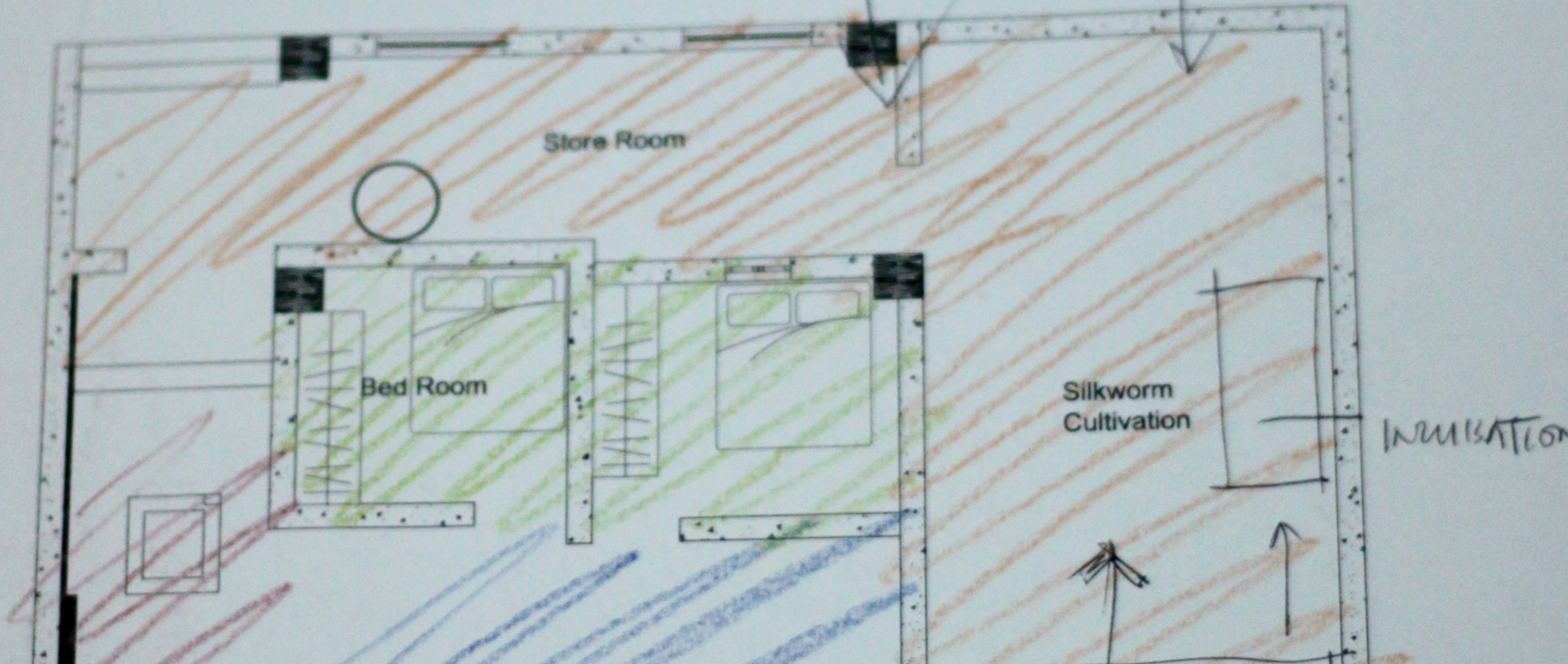
DESIGN PROCESS



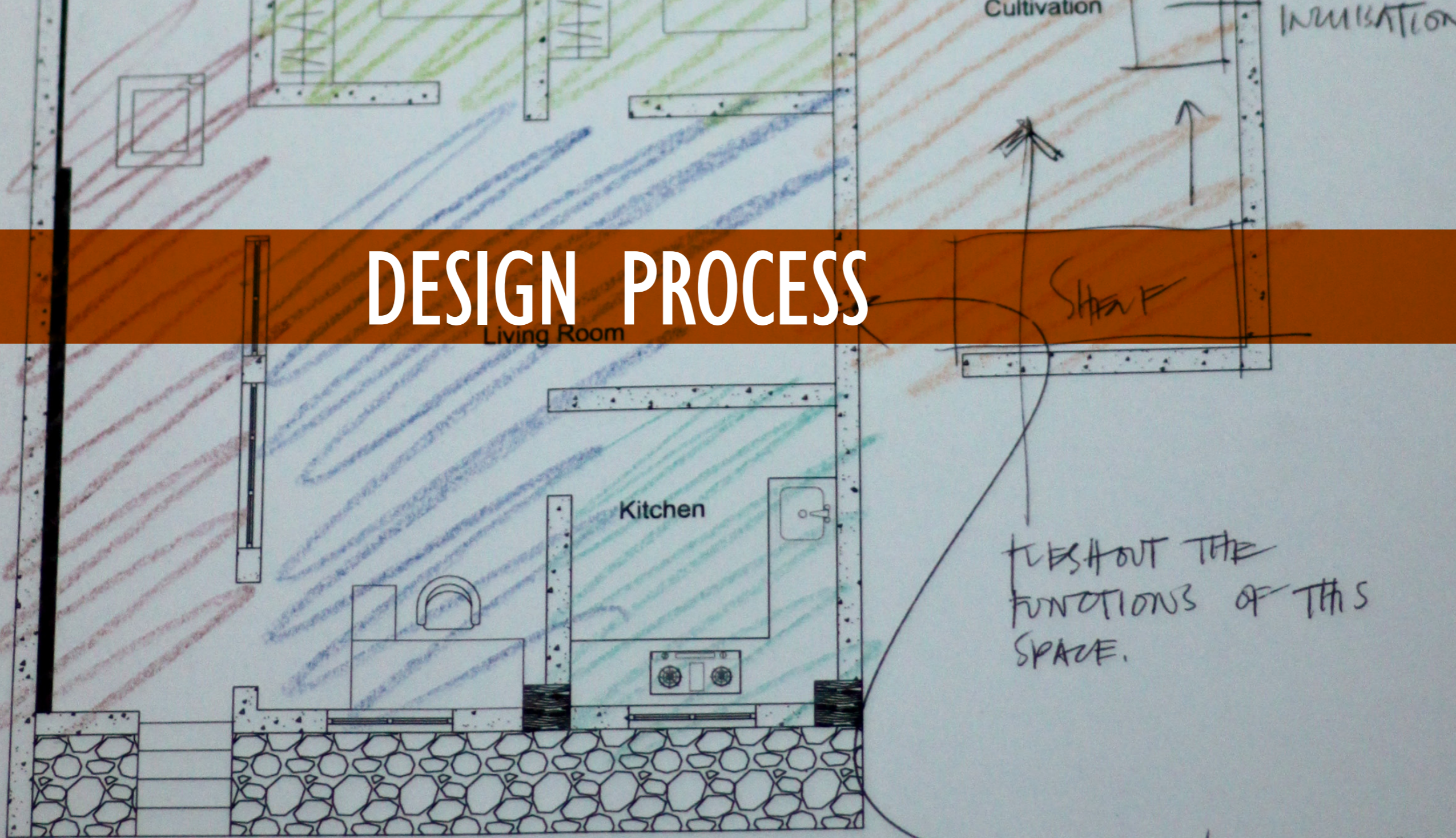
DESIGN PROCESS

WHAT'S THIS?

WHAT ARE THE SPACE REQUIREMENTS?



DESIGN PROCESS



Typical sites?

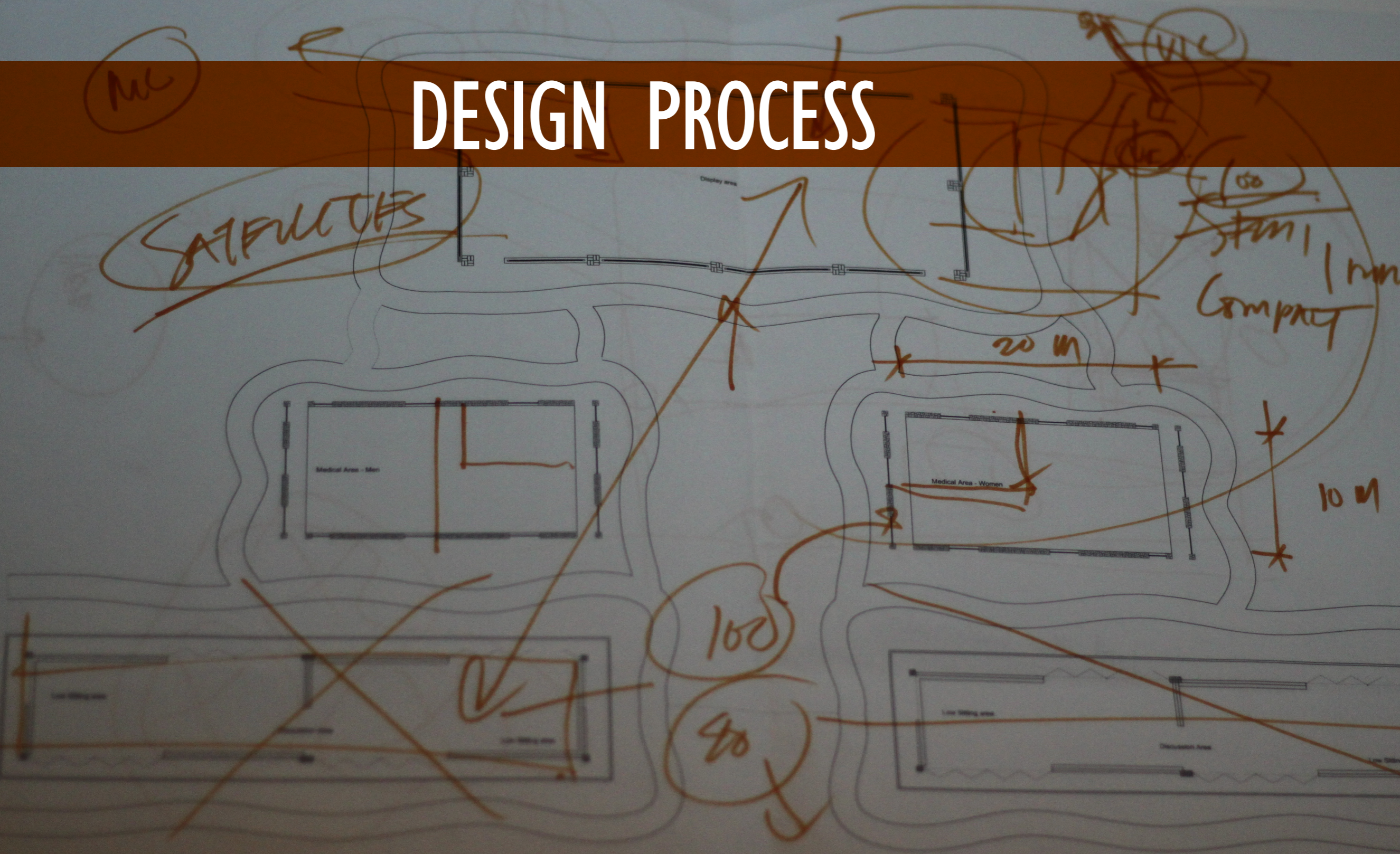
LOOK AT
"TRANSITION
SPACES"

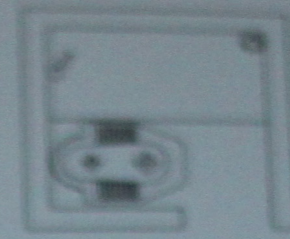
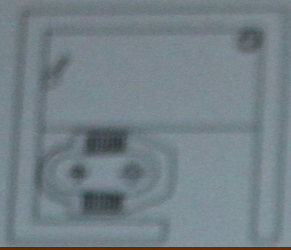
DESIGN PROCESS

MC

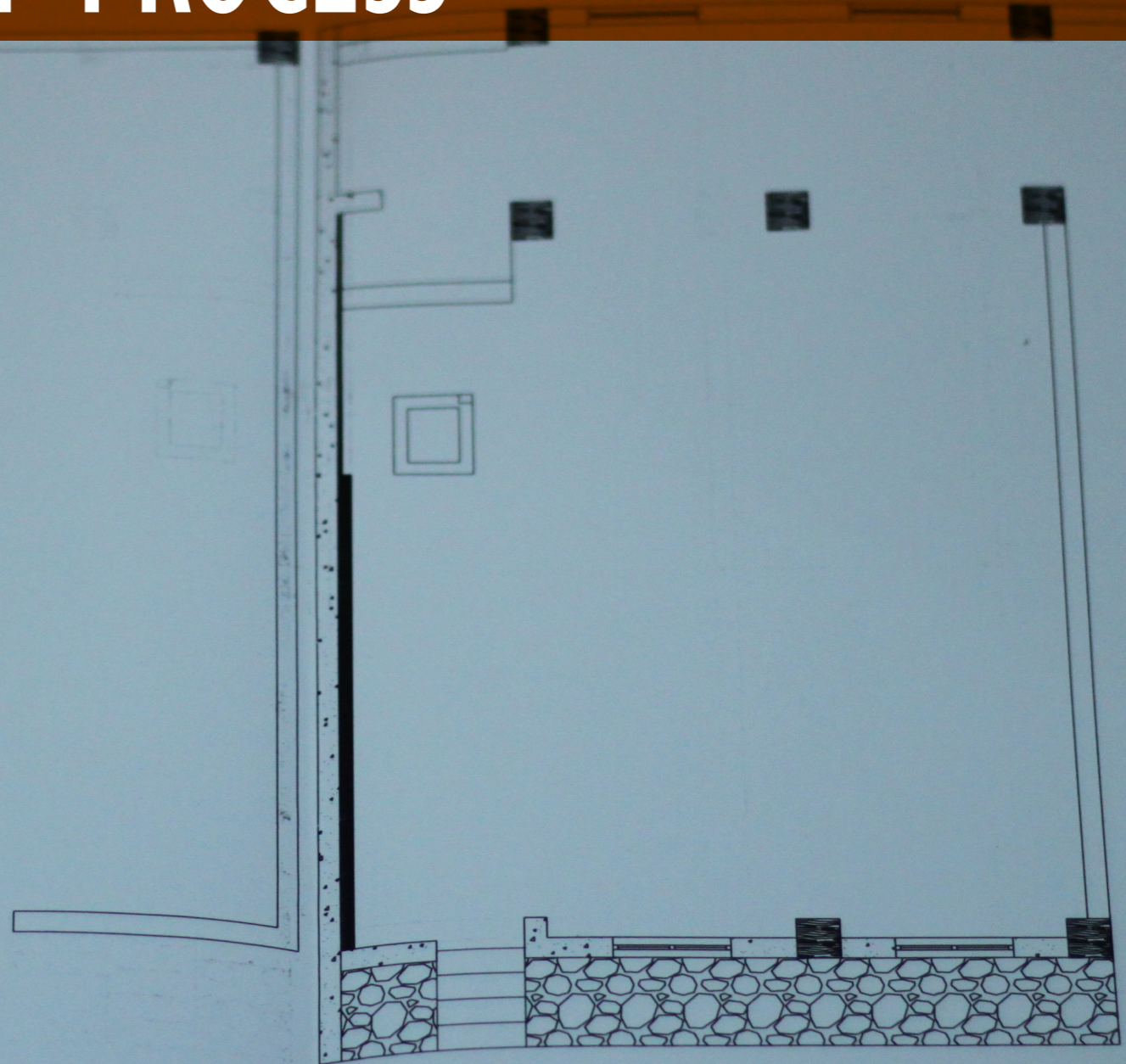
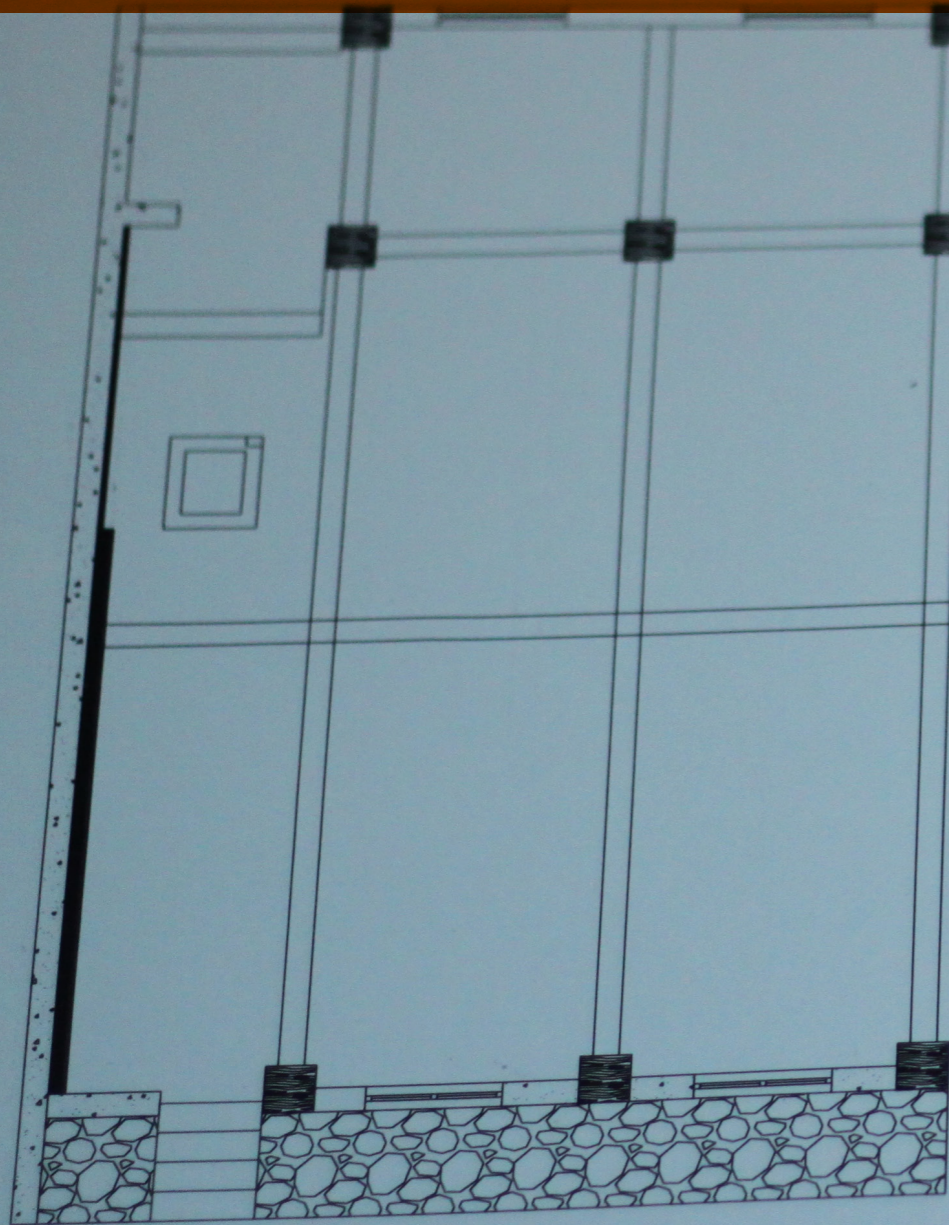
~~SATFULTES~~

50
1 min
Compart

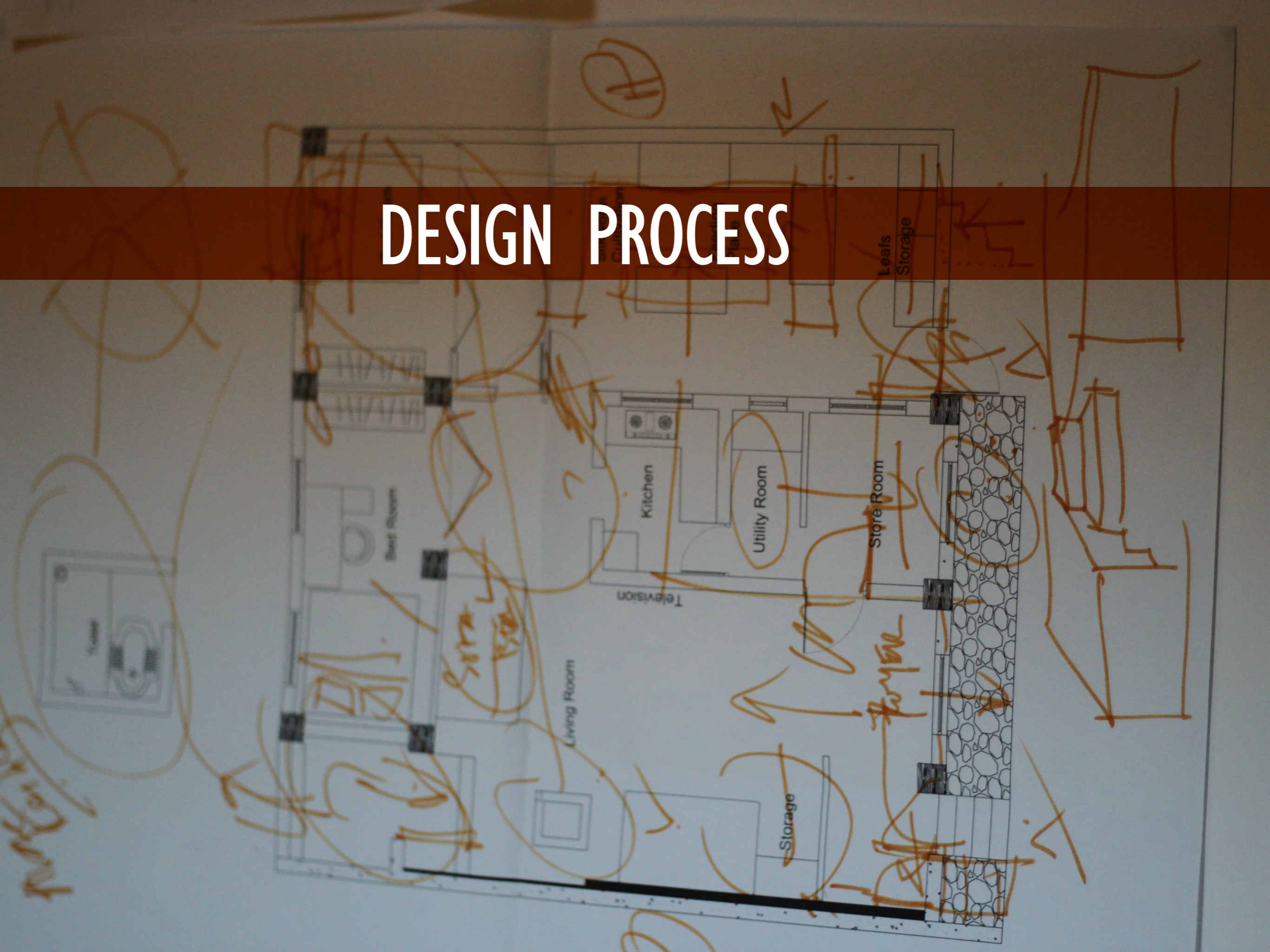




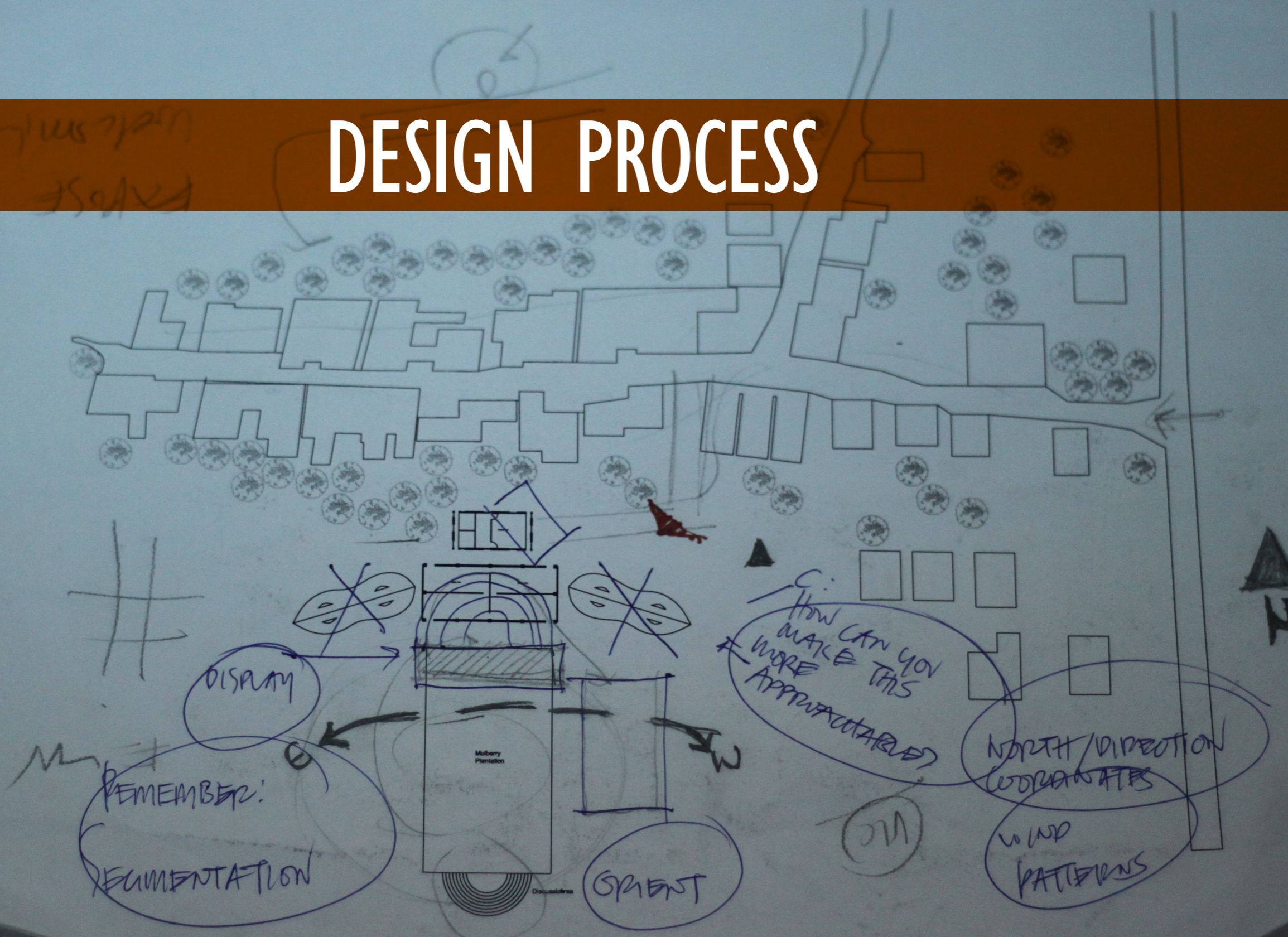
DESIGN PROCESS



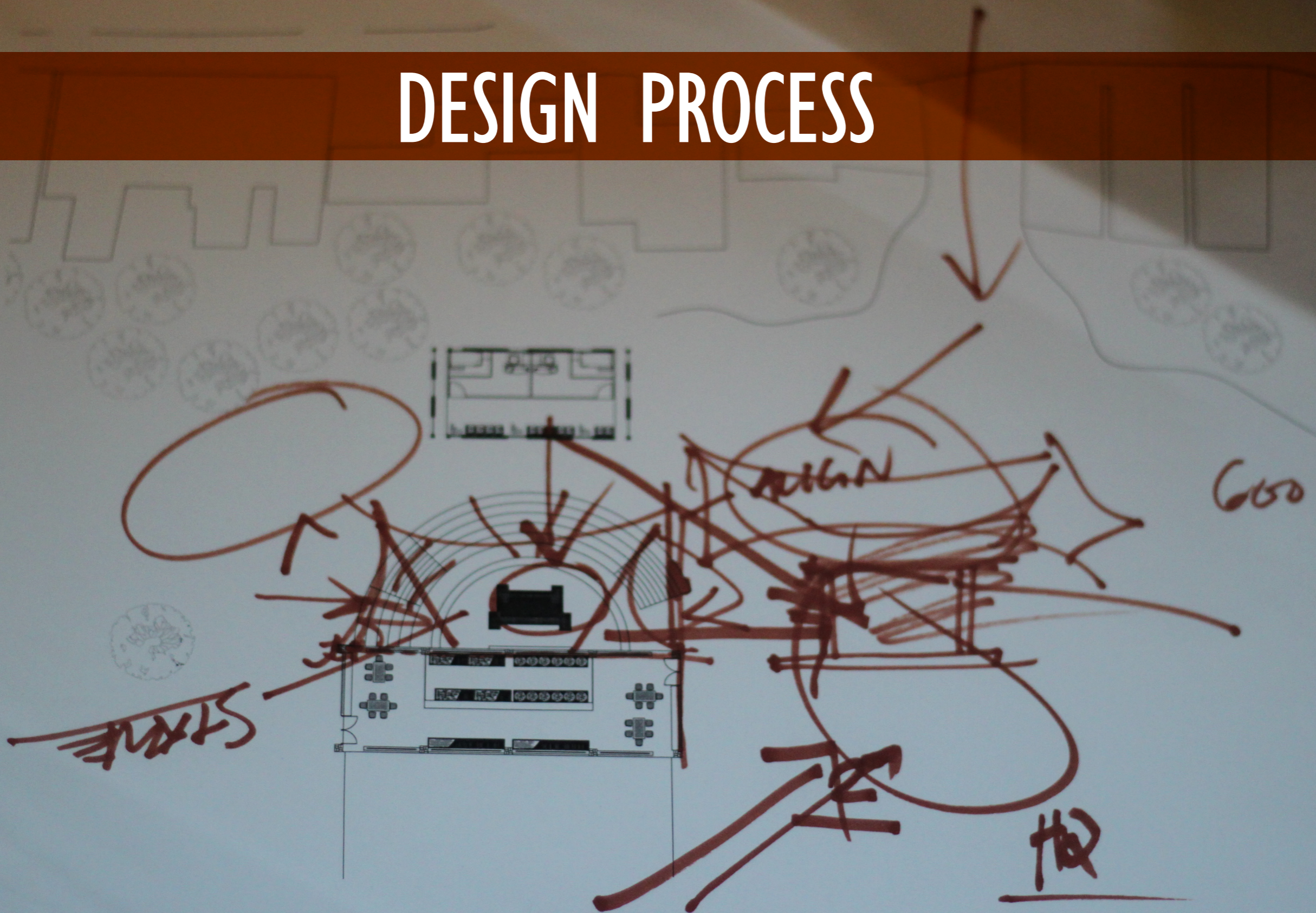
DESIGN PROCESS



DESIGN PROCESS



DESIGN PROCESS





Major Studio

Subject- Helping Community
(Occupation and Housing)

[Home](#)

[About](#)

RECENT POSTS

[Design process- systems Thinking](#)

[Design Process](#)

[Design process](#)

[Design process](#)

[Design Process](#)

ARCHIVES

[March 2013](#)

[February 2013](#)

[January 2013](#)

[December 2012](#)

[November 2012](#)

CATEGORIES

[Introduction](#)

[Uncategorized](#)

META

[Register](#)

[Log in](#)

[Entries RSS](#)

[Comments RSS](#)

Design process- systems Thinking

Posted on March 11, 2013

There are various studies that I found into such as "Yodakandiya Community Complex"

BLOG

In the District of Hambantota situated on Sri Lanka's south coast, Architecture for Humanity worked in partnership with UN Habitat and the local community to build three community buildings comprising a Community Center, a Library & Medical Centre and a Preschool. A new landscaped sports and recreation area was created as part of the community complex.

The buildings occupy a spectacular site located on the edge of Yala National Park, overlooking tropical forested mountains and Yoda Wewa, a vast reservoir constructed by the ancient Kings over 2000 years ago.

"Auroville"

The Auroville Earth Institute is researching, developing, promoting and transferring earth-based technologies, which are cost and energy effective

"Sulabh"

Sulabh International Social Service Organisation, a non-profit voluntary social organisation founded in 1970 by Dr. Bindeshwar Pathak, is dedicated to *Gandhian ideology of emancipation of scavengers. Sulabh has been working for the removal of untouchability and social*

Architect - Chitra Vishwanath

The aim of our practice is to design looking at spaces as ecological spaces not just physical spaces. Response to climate, conserving and using natural resources judiciously, and eliminating waste streams are sought to be consciously built in to each project.



[Follow](#)

Follow "Major Studio"

Get every new post delivered to your Inbox.

Join 572 other followers

[SIGN ME UP](#)

Powered by WordPress.com

Husband
(Venkatraju)

Wife
(Shilpa)

Grand Father

Grand Mother

Kids

FUNCTION MAPPING

Inside House Outside House Inside House Outside House Inside House Outside House Inside House Outside House

3
6
9
12
15
18
21
24

Analysis

Most used space - **Work place** and **Outside** (other work like, looking after the farm, going to the market and so on)

Analysis

Most used space - **Kitchen** and **Bed Room**, She even carries out activities like getting the kids ready for school, getting grocery and other household activities.

Analysis

Most used space - **Work place** and **Living Room**, Spending time with family, taking care of the farm and looking after the workplace when the son is not around.

Analysis

Most used space - **Work place**, **Kitchen** and **Bed Room**, Spending time with family and helping in household & work.

Analysis

Most used space - **Outside** and **Bed Room**, Extra activities like playing, studying at home and spending time with family.

- Living Room —
- Kitchen —
- Bed Room —
- Store Room —
- Work Place —
- Outside —

System Thinking

Yodakandiya Community Complex

“ In the District of Hambantota situated on Sri Lanka's south coast, Architecture for Humanity worked in partnership with UN Habitat and the local community to build three community buildings comprising a Community Center, a Library & Medical Centre and a Preschool. A new landscaped sports and recreation area was created as part of the community complex.”

The buildings occupy a spectacular site located on the edge of Yala National Park, overlooking tropical forest, mountains and Yoda Wewa, a vast reservoir constructed by the ancient Kings over 2000 years ago.”

Earth Auroville

“The Auroville Earth Institute is researching, developing, promoting and transferring earth-based technologies, which are cost and energy effective”

Sulabh

“Sulabh International Social Service Organisation, a non-profit organization, was founded in 1978 by Bhanu Prasad Pathak, an educationist and Gandhian ideologist of emancipating the scavengers. Sulabh has been working for the removal of untouchability and social discrimination against scavengers, a section of Indian society condemned to clean and carry human excreta manually”

Designers

Chitra Vishwanath

“The aim of our practice is to design looking at spaces as ecological spaces not just physical spaces. Response to climate, conserving and using natural resources judiciously, and eliminating waste streams are sought to be consciously built in to each project.”

The buildings are usually built with earth, have a lot of sun and wind, encourage recycling and reuse, attract local plants and birds, and are unique but comfortable spaces.”

Nisha's play school

“ The building design and form evolved out of demand to maximize daylighting and induce natural ventilation. Use of locally available materials, waste materials, and materials with low embodied energy.”

SYSTEMS THINKING

Services

Using Local Materials to build the complex

New techniques of building

Using vernacular materials

Engaging the Community to build the center so that people feel a sense of ownership.

Building for humanity

Rain water harvesting

Traditional architecture of Sri Lanka has been giving a lot of importance

Earth construction

Use lots of trees / plants to create comfortable environment


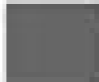
Daylighting, Passive cooling system and arranged of buildings in linear configuration prevailing wind direction for best cross ventilation

Flush compost toilet is eco-friendly, technically appropriate, socio-culturally acceptable and economically affordable

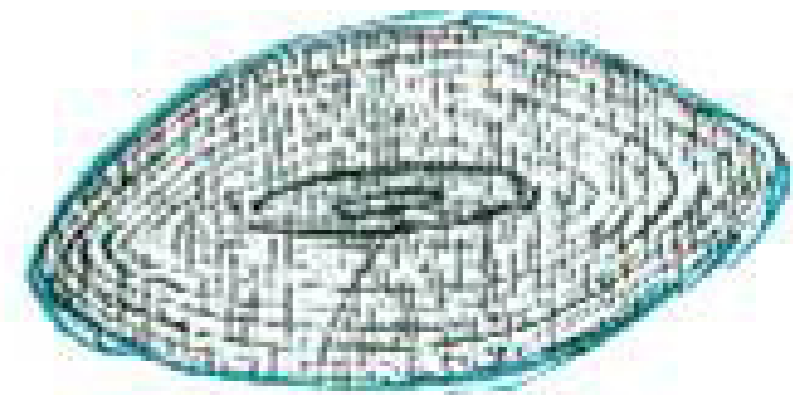
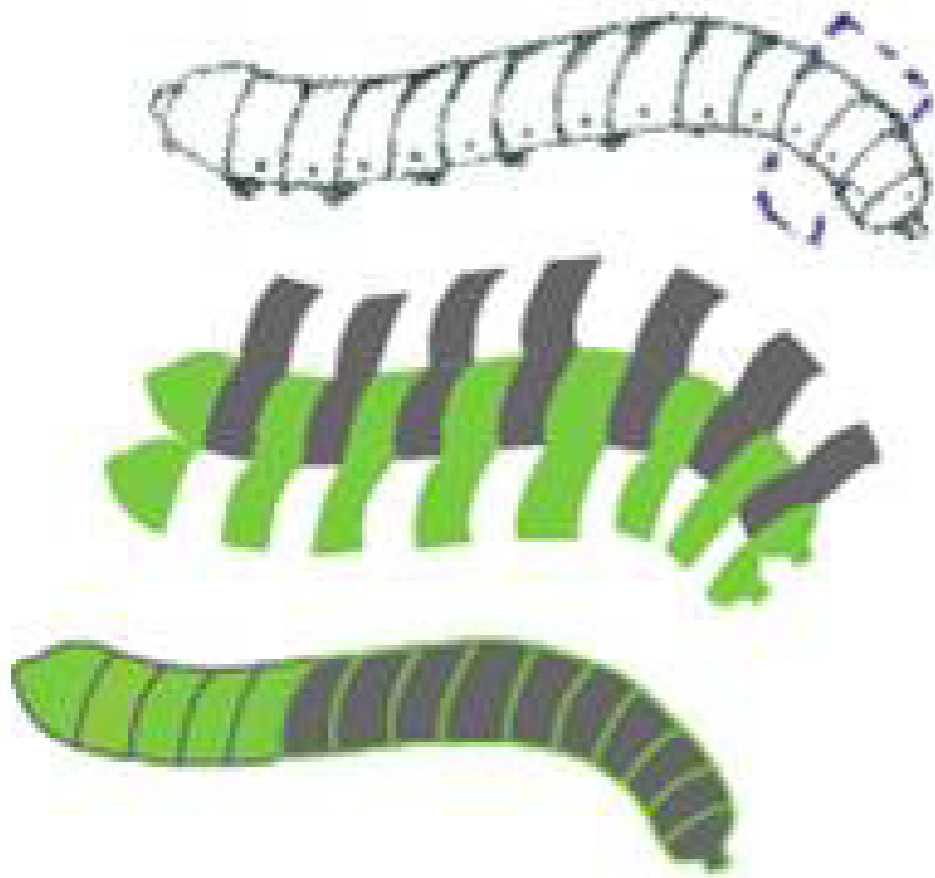
Toilet can easily be constructed by local labour and materials

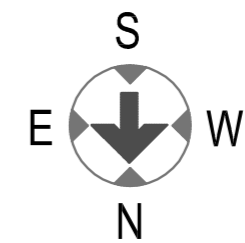
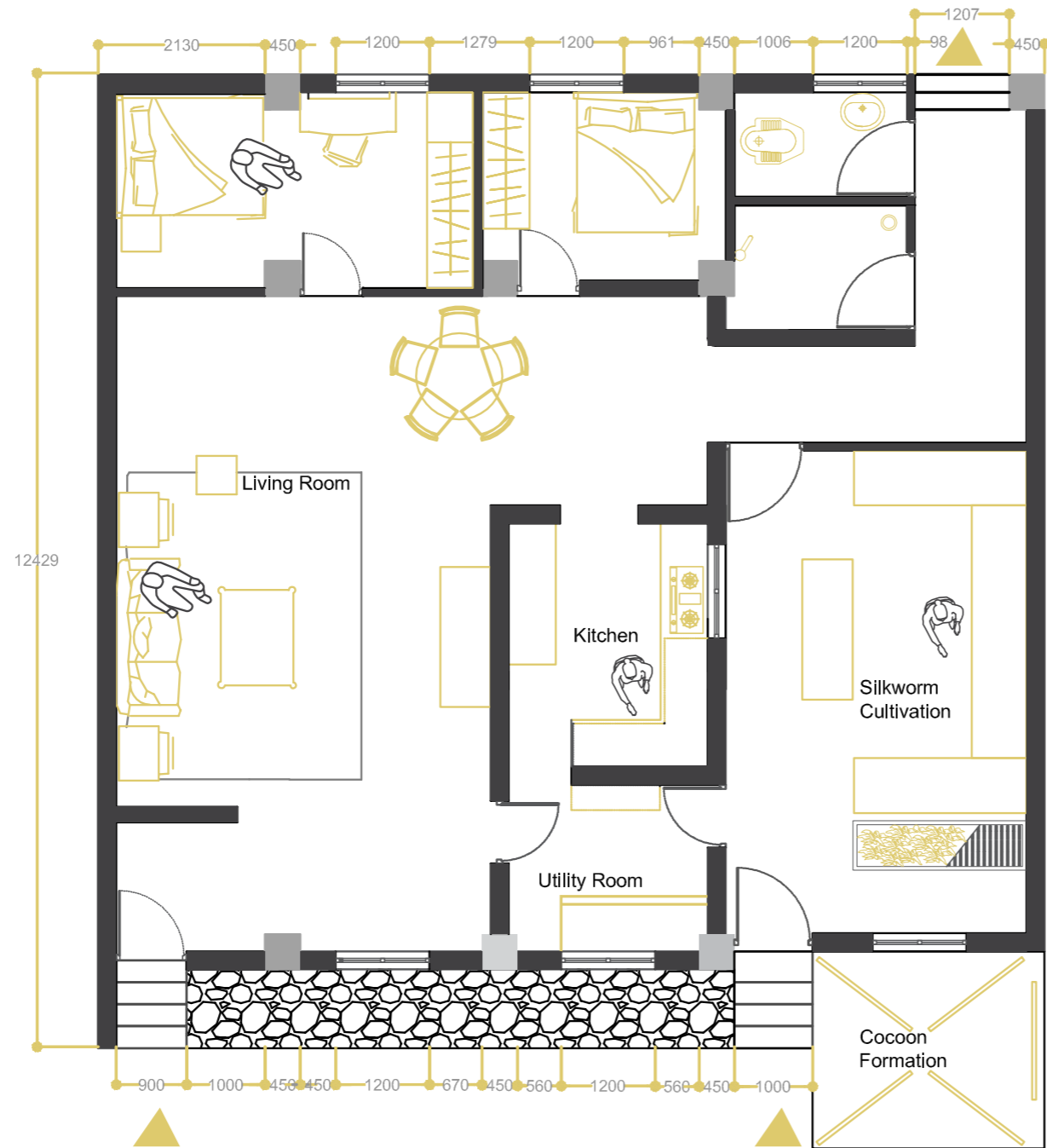
CONCEPT

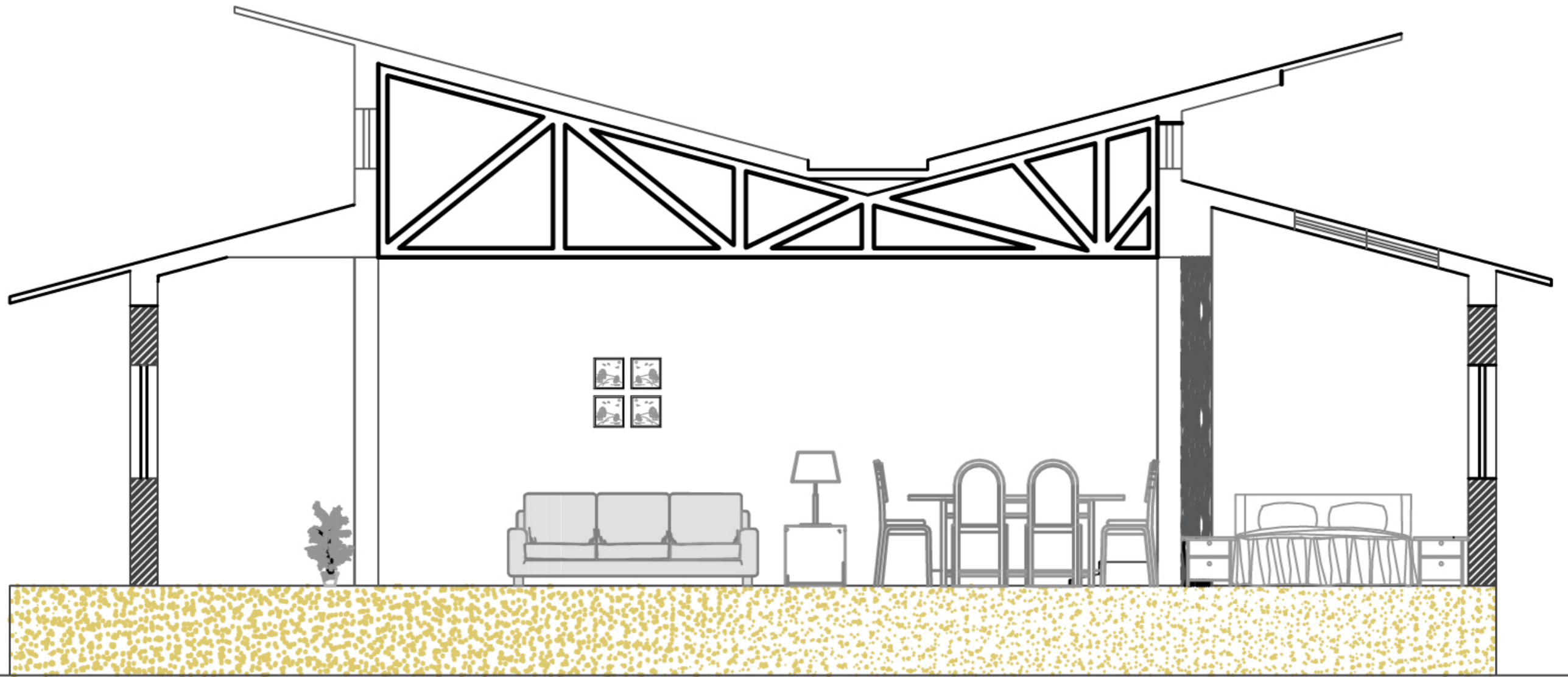
Concept development

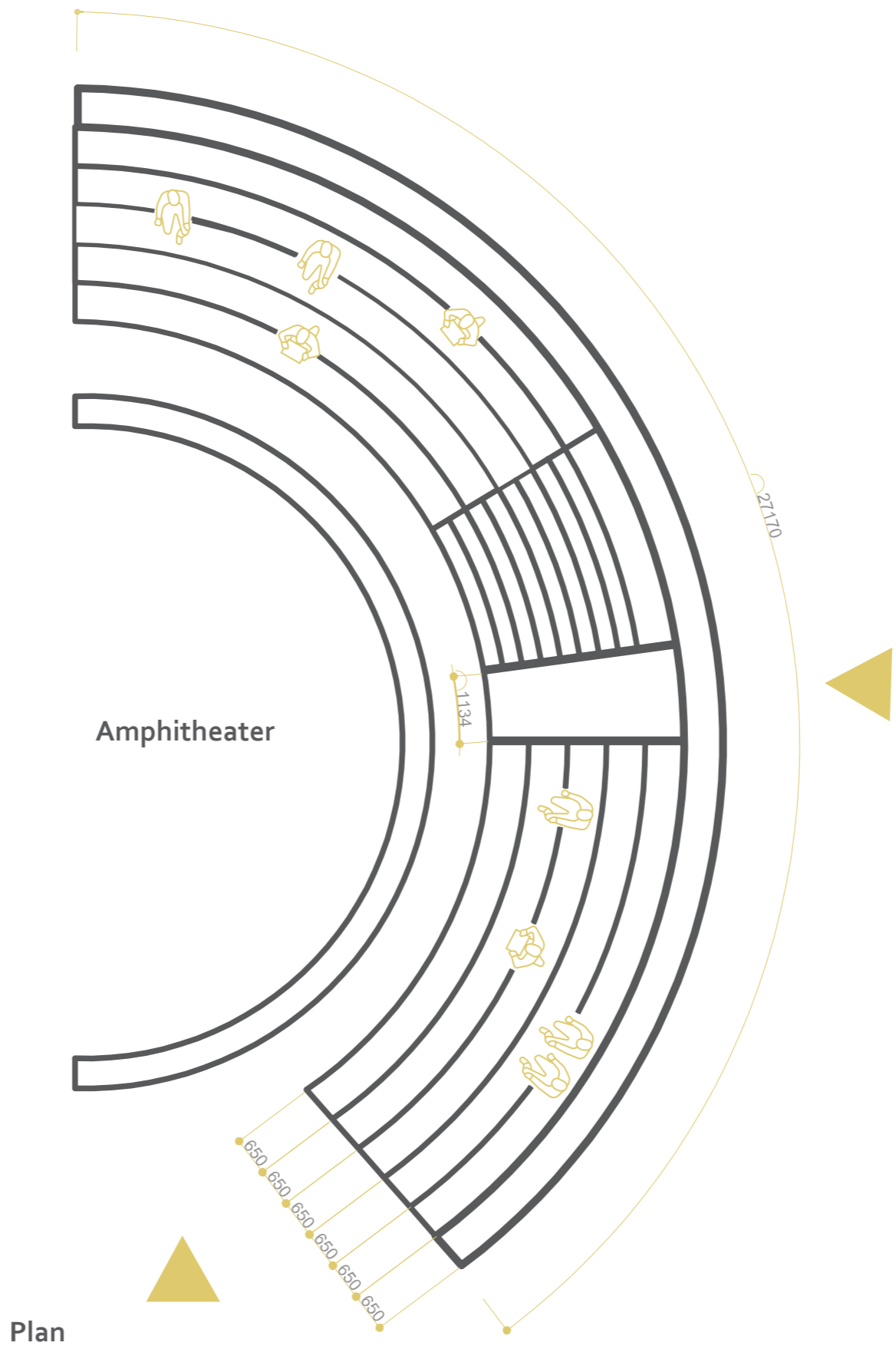
-  Community Centre
-  Housing Units
(attached work space)

Based on the existing site
and people's preferences of
not changing the positioning
of their house

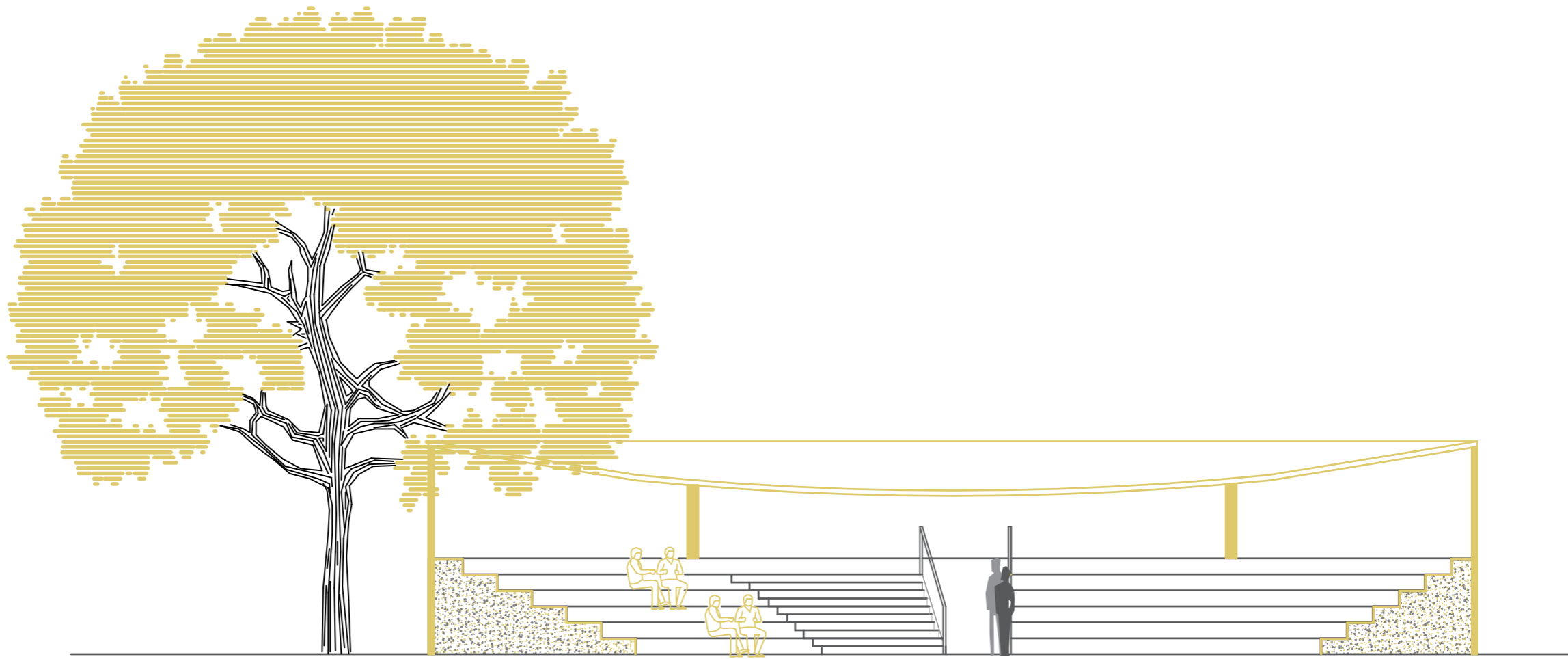


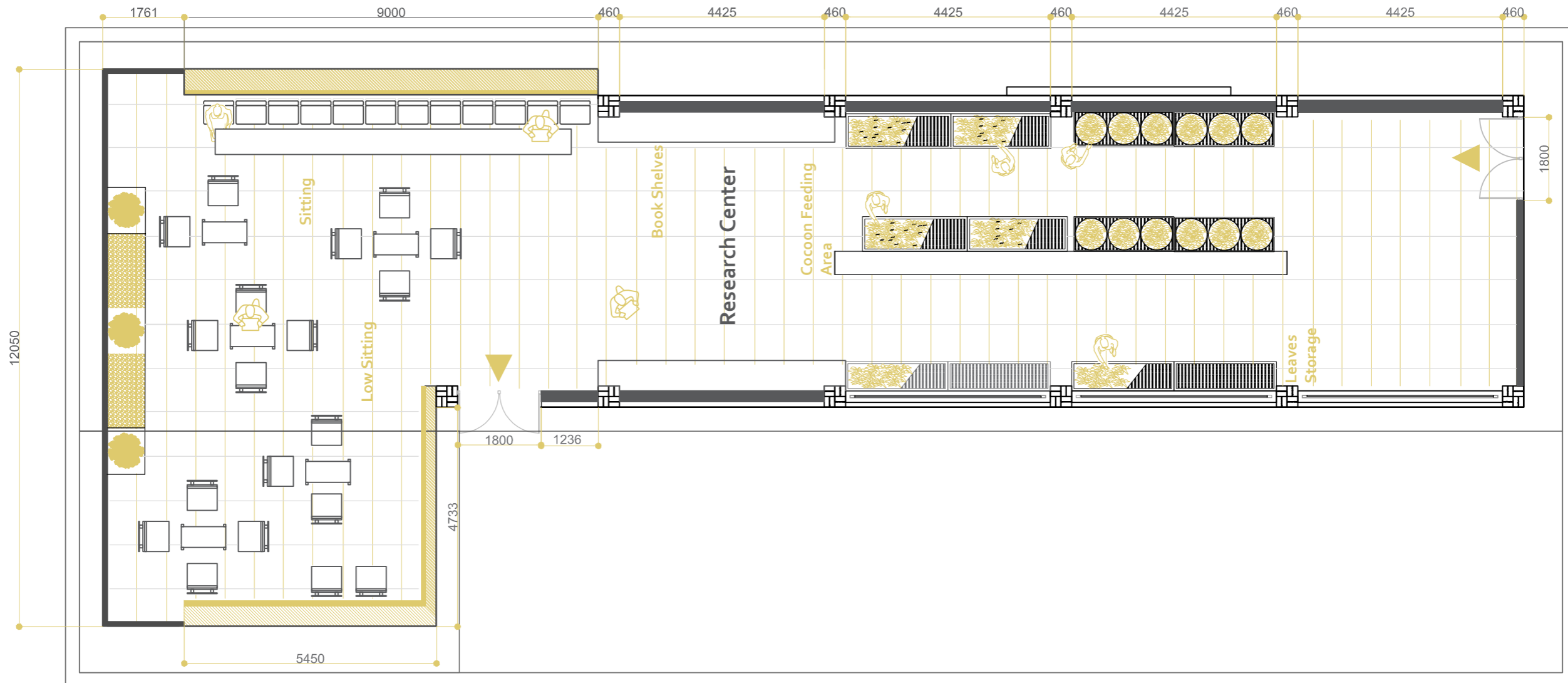




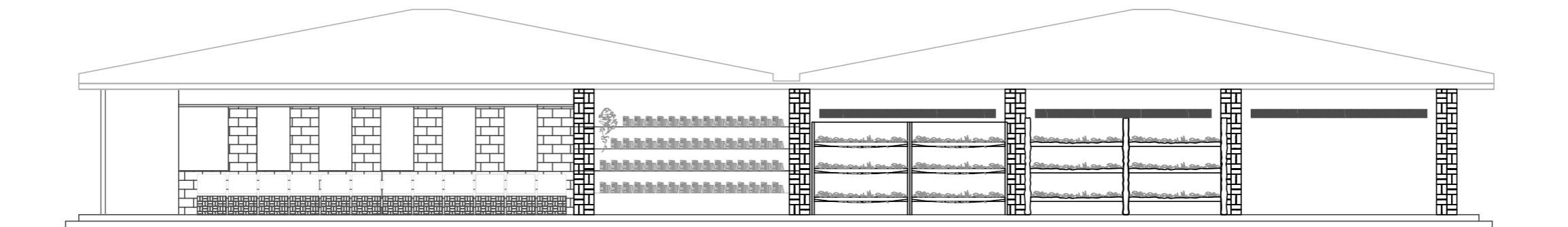


Plan









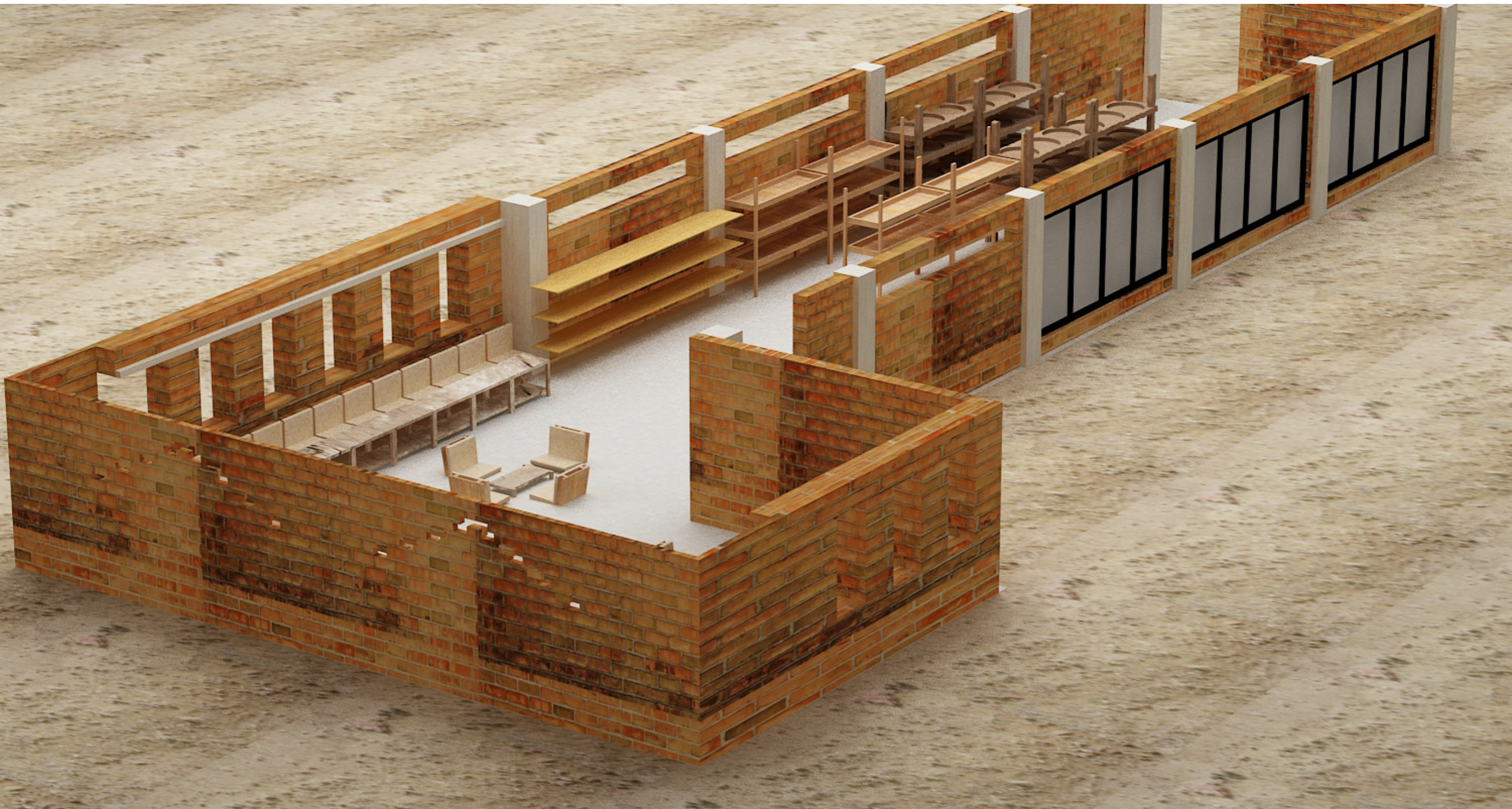
























THANK YOU

Major Studio Project
Tanvi Kurtarkar